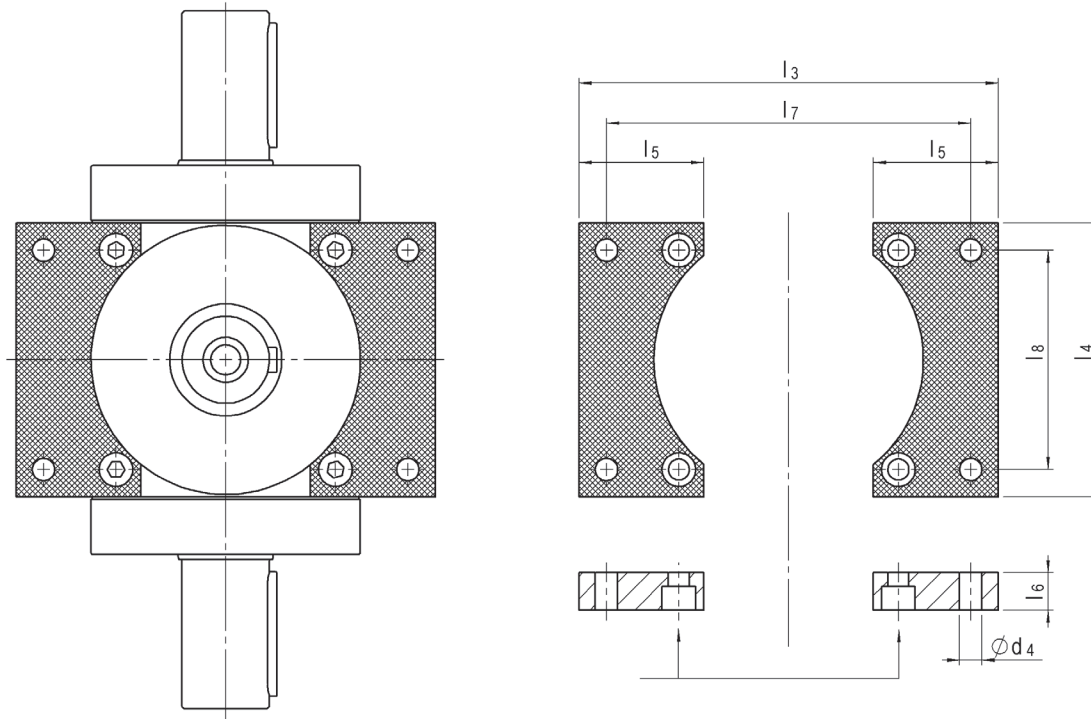


Base Mounted Feet



Frame Size	I3	I4 (-0.5)	I5	I6	I7 (+- 0.2)	I8 (+- 0.2)	Ød4	Screw Size	Total Weight (kg)
75	122	75	40	17	108	60	6.6	M6x12	0.6
90	145	90	45	17	125	72	6.6	M6x12	0.8
110	168	110	50	17	146	88	9	M8x18	1.1
140	208	140	60	20	178	110	11	M10x25	1.9
170	250	170	70	20	215	134	14	M12x25	2.7
210	310	210	90	25	265	170	18	M16x35	5.2
240	345	240	100	30	295	190	18	M16x35	8
280	385	280	100	30	335	220	18	M16x35	9.6
360	480	360	125	30	430	280	22	M20x40	15
450	580	450	140	30	520	350	22	M20x40	21.2

* Four socket head screws are included

Shaft Geometry

1. Shortened shaft
2. Smooth shaft
3. Shrink disc shaft

Environmental

1. USDA Food Grade Oil
2. Stainless steel housing, output shaft & fasteners
3. Viton or Teflon seals
4. ATEX compliance

Cooling

1. Oil circulation system: Gearbox is supplied ready for connection to external oil supply. External oil supply may consist of an oil tank, air-oil cooler, oil pump and pipework between oil tank and gearbox
2. Forced oil circulation system: For higher speeds, it may be necessary to use forced lubrication to ensure maximum life for the gear teeth and bearings. Gearbox is connected to an external pressurized lubrication system
3. Aluminum cooling fins: Increased heat dissipation
4. Aluminum cooling fins with fan: Further increased heat dissipation via mounted radial fan
5. Water cooling: Gearbox is supplied ready for connection to an external water cooler. The oil reservoir is cooled by a cooling coil