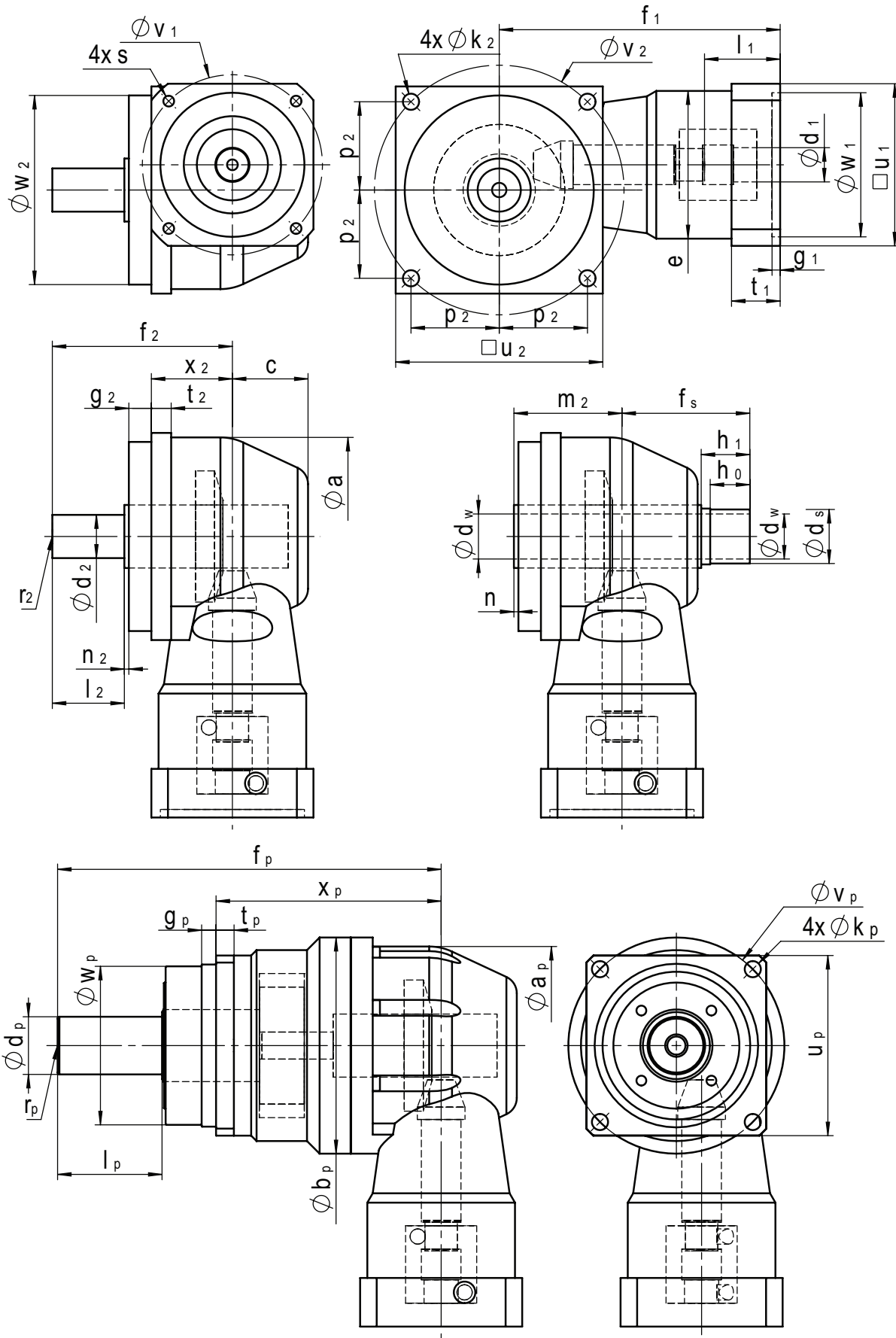


Solid Shaft, Hollow Shaft, Planetary Solid Shaft - L, LSV, PLS Configurations



Solid Shaft, Hollow Shaft, Planetary Solid Shaft - L, LSV, PLS Configurations

Input Dimensions

Frame Size	e	f1	g1	t1	Ød1	l1	□u1	Øv1	Øw1F7	s
55	Ø60	133	4.5	20	9	23	60	63	40	M4
					11	26	75	75	60	M5
					14	33	75	75	60	M5
75	Ø82	156	4.5	27	11	26	75	75	60	M5
					14	33	75	75	60	M5
					19	43	90	100	80	M6
90	Ø90	182	4.5	33	14	33	90	100	80	M6
					19	43	90	100	80	M6
					24	53	115	130	110	M8
115	Ø114	209.5	6.0	40	19	43	115	130	110	M8
					24	53	115	130	110	M8
					32	63	140	165	130	M10

Solid Output Dimensions

Frame Size	Øa	c	Ød2k6	l2	f2	n2	r2	x2	g2	t2	Øk2	p2	□u2	Øv2	Øw2 g6
55	87	36	20	35	87	1.5	M6	37	13.5	9	6.6	39	90	110.3	89
75	110	42	24	40	100	2.5	M8	45	12.5	11	9	49	115	138.6	105
90	134	52	32	50	122.5	2	M12	58	12.5	14	11	59	140	166.9	125
115	162	63	40	60	149	3	M16	71	15	17	13.5	75	170	203.6	150

Hollow Output Dimensions

Frame Size	Øa	c	ØdwH7	Ødsf7	h0	h1	fs	m2	n	x2	g2	t2	Øk2	p2	□u2	Øv2	Øw2 g6
55	87	36	20	24	20	26.5	64.5	52	1.5	37	13.5	9	6.6	39	90	110.3	89
75	110	42	25	30	22	27	71	60	2.5	45	12.5	11	9	49	115	138.6	105
90	134	52	30	36	26	33	87	72.5	2	58	12.5	14	11	59	140	166.9	125
115	162	63	40	50	29	37	102	89	3	71	15	17	13.5	75	170	203.6	150

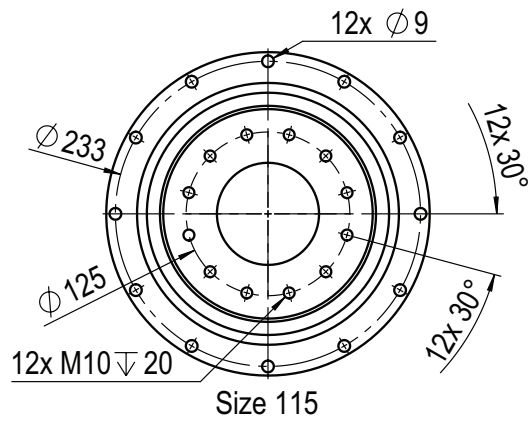
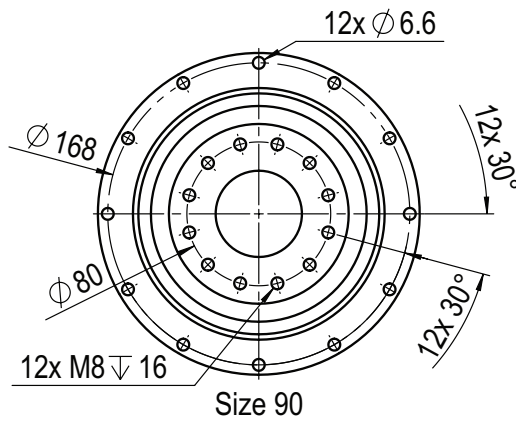
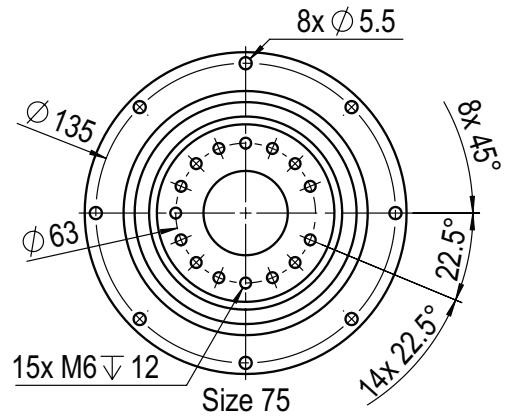
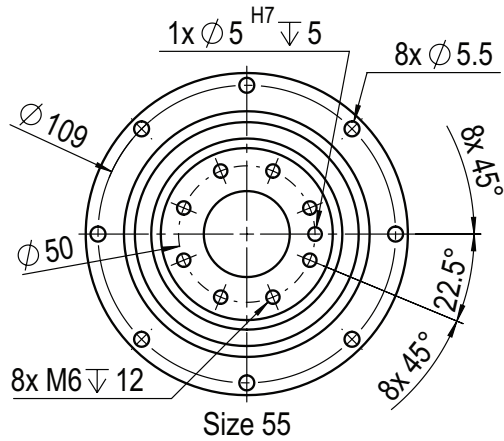
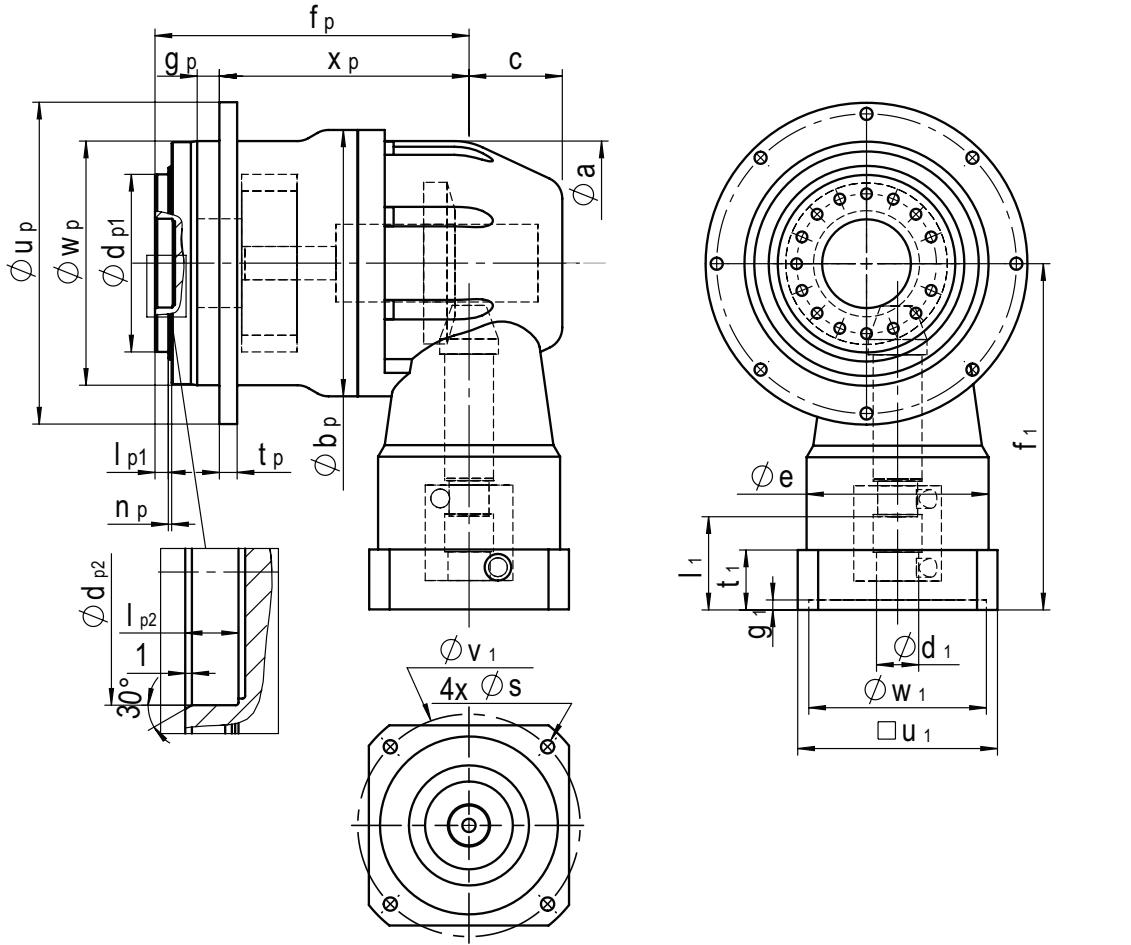
* Includes extended shaft for shrink disc. Shrink disc sold separately

Planetary Solid Output Dimensions

Frame Size	Øap	Øbp	Ødp j6	lp	fp	rp	□up	Øvp	Øwp g6	xp	tp	gp	Økp
55	89	89	22	36	167	M8	75	85	70	111	7	6	6.6
75	115	120	32	58	213	M12	100	120	90	125	10	8	9
90	142	150	40	82	263.5	M16	140	165	130	151.5	12	10	11
115	181	200	55	82	300.5	M20	180	215	160	188.5	15	12	13.5

* Optional keyed output shaft available

Planetary Robot Flange - PLT Configuration



Planetary Robot Flange - PLT Configuration

Input Dimensions

Frame Size	e	f1	g1	t1	Ød1	l1	□u1	Øv1	Øw1F7	s
55	Ø60	133	4.5	20	9	23	60	63	40	M4
					11	26	75	75	60	M5
					14	33	75	75	60	M5
75	Ø82	156	4.5	27	11	26	75	75	60	M5
					14	33	75	75	60	M5
					19	43	90	100	80	M6
90	Ø90	182	4.5	33	14	33	90	100	80	M6
					19	43	90	100	80	M6
					24	53	115	130	110	M8
115	Ø114	209.5	6.0	40	19	43	115	130	110	M8
					24	53	115	130	110	M8
					32	63	140	165	130	M10

Planetary Robot Flange Output Dimensions

Frame Size	Øa	c	xp	fp	Ødp1 h7	lp1	Ødp2F7	lp2	Øup	Øwp h7	tp	gp	Øbp
55	89	36	72.5	102.5	63	6	31.5	6	118	90	7	10	89
75	115	42	112.5	141.5	80	6	40	8	145	110	8	10	120
90	142	52	126	164	100	6	50	10	179	140	10	14	150
115	181	63	159	209	160	8	80	16	247	200	12	15	208

* Above input dimensions are for reference only and depend on motor dimensions
 Contact us to configure the appropriate adaptation for your specific motor.