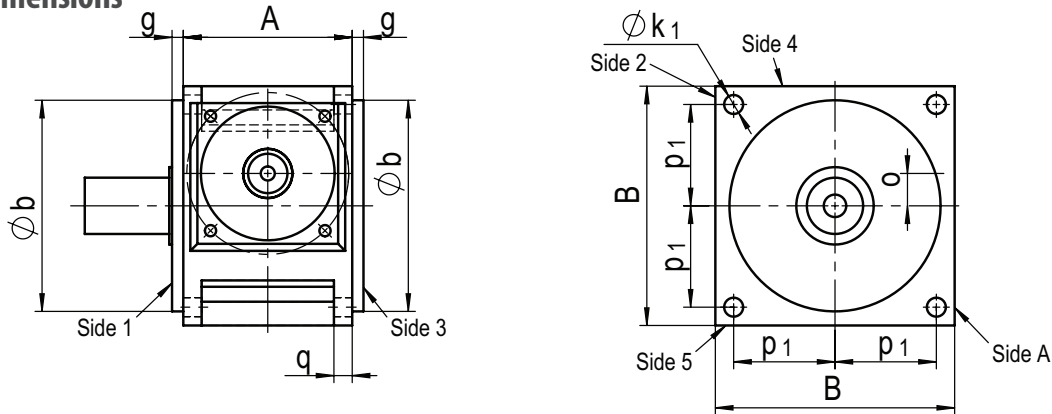
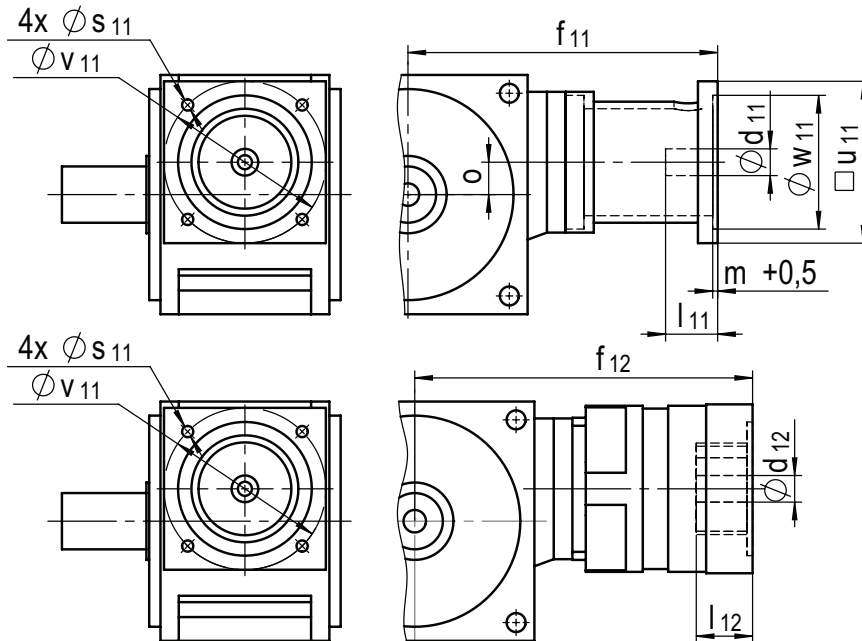


Base Output Dimensions



Frame Size	A	B	Ø b g6	g	o	p1	p2	Ø k1	k2	q
37	56	75	74	11	7.5	31	21	6.6	M6	-
55	60	90	89	13.5	9	39	22	6.6	M6	8
75	80	115	105	8.5	14	49	27	9	M8	10
90	100	140	125	8	18	59	33	11	M10	11
115	120	170	150	8	23	72	40	13.5	M12	13
130	138	192	173	10	27	82	48	13.5	M12	14
140	146	215	195	10	32	91	52	17.5	M16	15
160	166	240	225	10	38	103	60	17.5	M16	16
190	196	260	245	10	42	112	70	17.5	M16	17

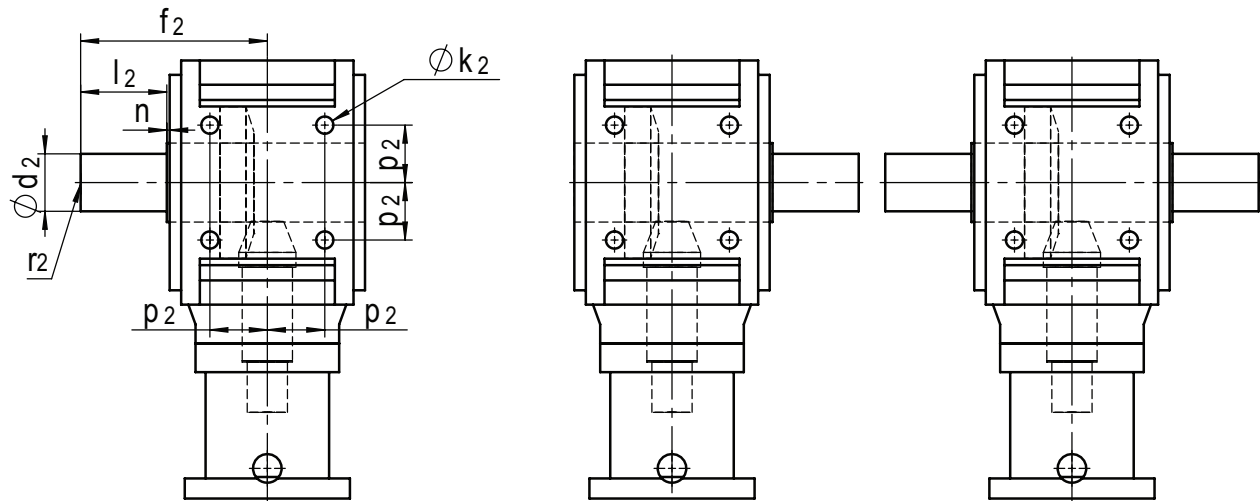
Base Input Dimensions



Frame Size	Single Stage					Two Stage				
	Ø d11 x l11			□ u x f11		Ø d12 x l12 x f12				
37	9x23	11x26	-	55x127.5	70x127.5	-	-	-	-	-
55	9x23	11x26	14x30	55x130	75x140	-	9x25x158.1	11x25x158.1	14x30x168.1	-
75	11x26	14x30	19x40	75x168	90x168	90x180	14x30x198.1	16x30x198.1	19x40x198.6	24x50x206.6
90	14x30	19x40	24x50	90x191	115x191	115x201	14x30x214.1	16x30x214.1	19x40x214.1	24x50x222.6
115	19x40	24x50	32x60	115x220	140x220	140x235	19x40x246.5	24x50x255.5	32x60x255.5	-
130	24x50	32x60	38x80	140x245	190x245	190x260	19x40x263.5	24x50x272.5	32x60x272.5	-
140	24x50	32x60	38x80	140x260	190x260	190x280	24x50x297.8	32x60x302.8	38x80x322.8	-
160	32x60	38x80	48x80	140x298	190x308	260x308	24x50x317.8	32x60x322.8	38x80x342.8	-
190	32x60	38x80	48x80	190x335	260x345	-	24x50x336.8	32x60x341.8	38x80x361.8	-

* Above input dimensions are for reference only and depend on motor dimensions.
Contact us to configure the appropriate adaptation for your specific motor.

Solid Output Shaft



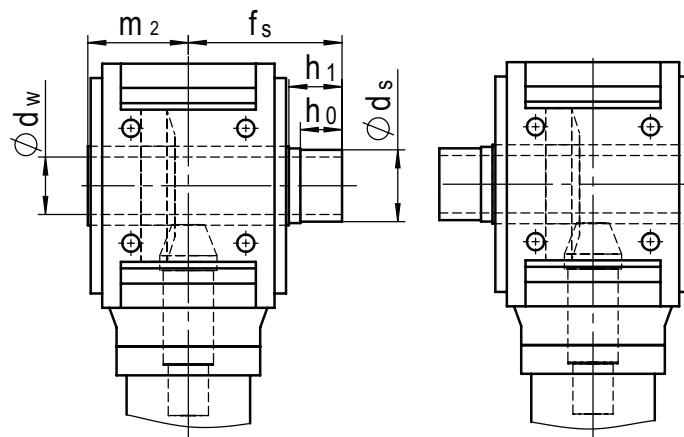
Shaft Arrangement 1L

Shaft Arrangement 3L

Shaft Arrangement 13L

Frame Size	$\varnothing d_2$ k6	l_2	f_2	n	r_2
37	16	25	65	1	M5
55	20	35	80	1.5	M6
75	24	40	90	1.5	M8
90	32	50	110	2	M12
115	40	60	130	2	M16
130	48	75	156	2	M16
140	55	90	175	2	M20
160	60	100	195	2	M20
190	70	110	220	2	M20

Hollow Output Shaft



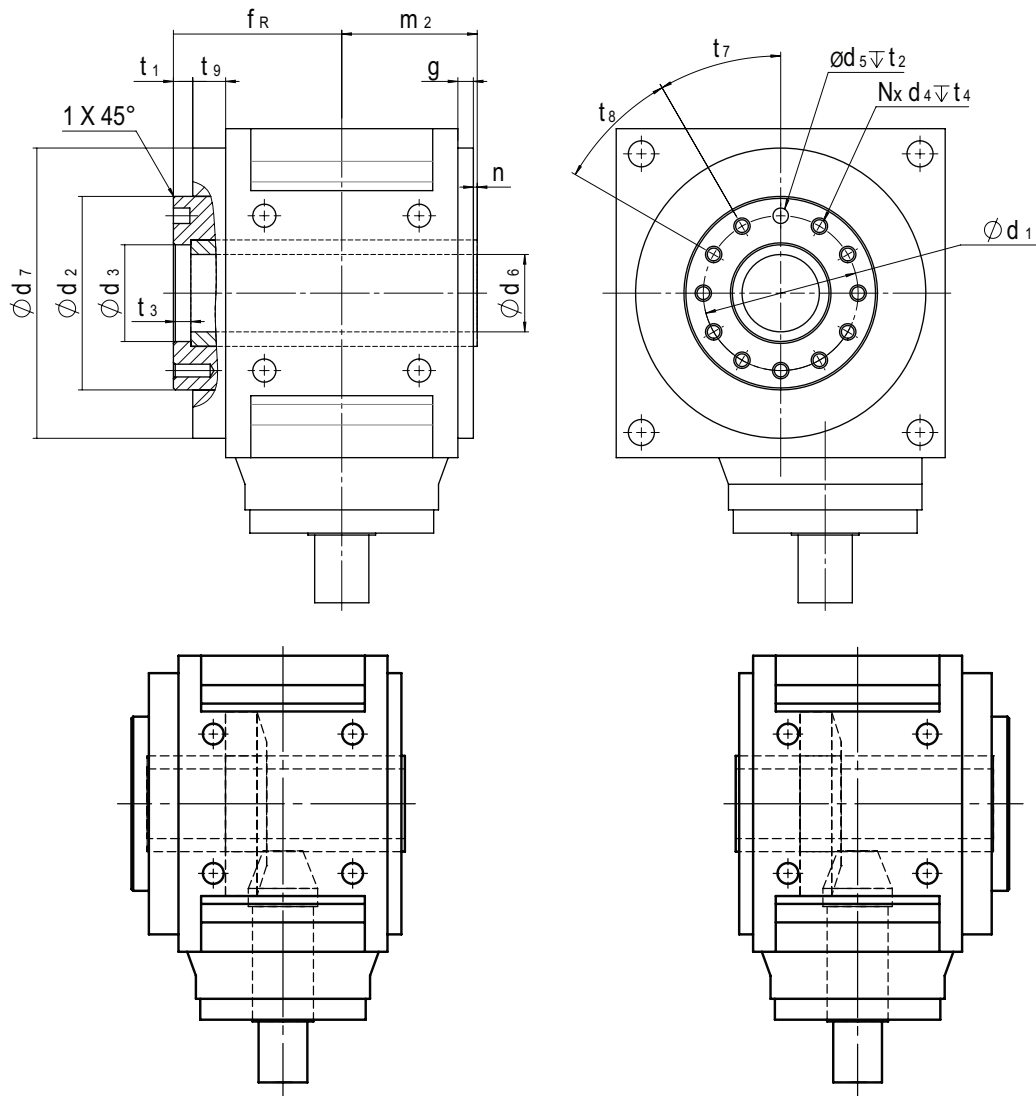
Shaft Arrangement 1LSV

Shaft Arrangement 3LSV

Frame Size	$\varnothing d_w$ H7	$\varnothing d_s$ f7	h_0	h_1	f_s	m_2
37	16	20	20	25	66	40
55	20	24	20	25	71.5	45
75	25	30	22	27	79.5	50
90	30	36	26	31	93	60
115	40	50	29	34	107	70
130	48	55	32	37	121	81
140	55	68	32	38	127	85
160	60	75	34	41	139	95
190	70	80	34	41	159	110

*1) Hollow output shaft arrangements 1LSV/3LSV include extended shaft for shrink disc. Shrink disc sold separately.

ISO9409-1 Robot Flange with Hollow Shaft



Shaft Arrangement 1RFH

Shaft Arrangement 3RFH

Frame Size	Ø d1	Ø d2 h8	Ø d3H7	d4	Ø d5H7	Ø d6	Ø d7	fR	m2
55	40	50	25	M6	6	18	89	57	45
75	50	63	31.5	M6	6	24	105	62.5	50
90	63	80	40	M6	6	28	125	73	60
115	80	100	50	M8	8	40	150	87	70
130	80	100	50	M8	8	40	173	96.5	81
140	100	125	63	M8	8	52	195	100.5	85
160	100	125	63	M8	8	52	225	115	95
190	125	160	80	M10	10	65	245	132.5	110

Frame Size	g	n	t1	t2	t3	t4	t7	t8	t9	N
55	13.5	1.5	7	6.5	7	>1.5 x d4	45°	45°	20	7
75	8.5	1.5	7	6.5	7	>1.5 x d4	45°	45°	15.5	7
90	8	2	7	6.5	7	>1.5 x d4	45°	45°	16	7
115	8	2	10	8.5	8.5	>1.5 x d4	30°	30°	17	11
130	10	2	10	8.5	8.5	>1.5 x d4	30°	30°	17.5	11
140	10	2	10	8.5	8.5	>1.5 x d4	30°	30°	17.5	11
160	10	2	12	8.5	8.5	>1.5 x d4	30°	30°	20	11
190	10	2	12	10.5	8.5	>1.5 x d4	30°	30°	22.5	11