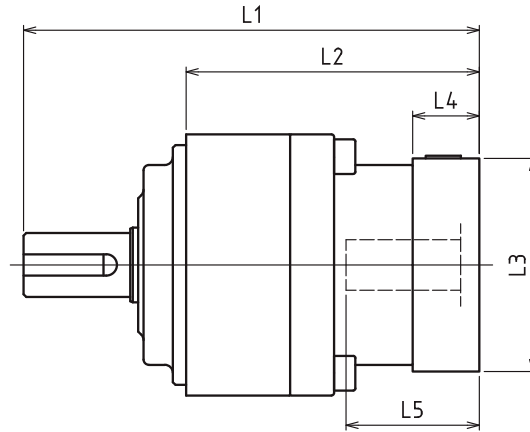


VRSF D-Frame – 1-Stage and 2-Stage Adapter Dimensions



Model number	**: Adapter code	1-Stage					2-Stage				
		L1	L2	L3	L4	L5	L1	L2	L3	L4	L5
VRSF-□-□D-8** (Input shaft bore ≤ φ8)	AA·AC·AD·AF·AG·AL·AM·AN·AQ	--	--	--	--	--	163	102	□52	15.5	32
	AB·AE·AH·AJ·AK	--	--	--	--	--	168	107	□52	20.5	37
	BA·BB·BD·BE·BG·BH·BJ	--	--	--	--	--	163	102	□60	15.5	32
	CA	--	--	--	--	--	168	107	□70	20.5	37
VRSF-□-□D-14** (Input shaft bore ≤ φ14)	BA·BB·BD·BE·BF·BG·BH·BJ·BK·BP	155	94	□65	16.5	35	169	108	□65	16.5	35
	BC·BH·BM·BN	160	99	□65	21.5	40	174	113	□65	21.5	40
	CA·CC	155	94	□70	16.5	35	169	108	□70	16.5	35
	DA·DB·DC·DD·DF·DH·DJ	155	94	□80	16.5	35	169	108	□80	16.5	35
	EA·EB·EC·EF·EG·EK·EL	155	94	□90	16.5	35	169	108	□90	16.5	35
	FA	155	94	□100	16.5	35	169	108	□100	16.5	35
	FB	165	104	□100	26.5	45	179	118	□100	26.5	45
VRSF-□-□D-19** (Input shaft bore ≤ φ19)	JA	170	109	□150	31.5	50	184	123	□115	31.5	50
	DA·DB·DC	171	110	□80	25	50	184	123	□80	25	50
	EB·ED	171	110	□90	25	50	184	123	□90	25	50
	FA	171	110	□100	25	50	184	123	□100	25	50
	FB	181	120	□100	35	60	194	133	□100	35	60
	GB·GD·GJ	171	110	□115	25	50	184	123	□115	25	50
	HA	171	110	□130	25	50	184	123	□130	25	50
	HB	186	125	□130	40	65	199	138	□130	40	65
	HC·HD·HE	176	115	□130	30	55	189	128	□130	30	55
VRSF-□-□D-28** (Input shaft bore ≤ φ28)	JA	181	120	□150	35	60	194	133	□150	35	60
	JB	186	125	□150	40	65	199	138	□150	40	65
	FA·FB·FC	186	125	□100	35	67	200.5	139.5	□100	35	67
	FD·FE	181	120	□100	30	62	195.5	134.5	□100	30	62
	GA·GB·GC·GD·GE·GF·GG·GH	186	125	□115	35	67	200.5	139.5	□115	35	67
	HA·HC·HD	186	125	□130	35	67	200.5	139.5	□130	35	67
	HB	196	135	□130	45	77	210.5	149.5	□130	45	77
	HE	201	140	□130	50	82	215.5	154.5	□130	50	82
	HF	181	120	□130	30	62	195.5	134.5	□130	30	62
	JA·JB·JC·JF	186	125	□150	35	67	200.5	139.5	□150	35	67
	JD	206	145	□150	55	87	220.5	159.5	□150	55	87
	JE	210.5	149.5	□150	45	77	210.5	149.5	□150	45	77
KA·KB	186	125	□180	35	67	200.5	139.5	□180	35	67	
	KD	196	135	□180	45	77	210.5	149.5	□180	45	77

*1) Single reduction : 1/3 - 1/59, Double reduction : 1/15 - 1/81

*2) Bushing will be inserted to adapt to motor shaft

For an explanation on the Adapter Flange Code, please turn to page 422.

A more comprehensive adapter flange offering can be found using the NIDEC-SHIMPO Online Selector Tool. The variety is constantly expanding and being updated on the Selector Tool. If you have any questions or need any support, contact NIDEC-SHIMPO.