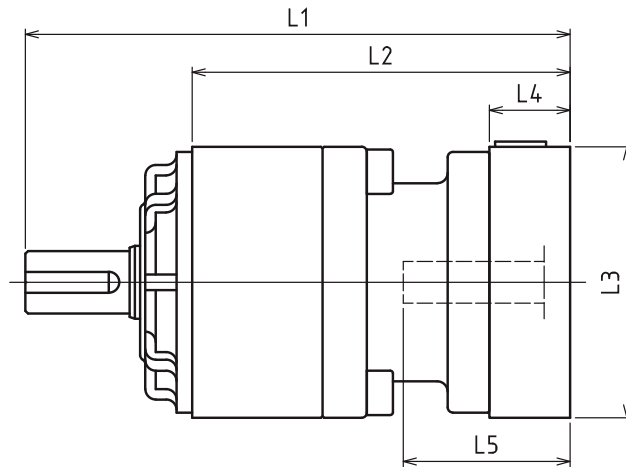


VRSF B-Frame – 1-Stage and 2-Stage Adapter Dimensions



Model number	**: Adapter code	1-Stage					2-Stage				
		L1	L2	L3	L4	L5	L1	L2	L3	L4	L5
VRSF-□-□B-8** (Input shaft bore ≤ φ8)	AA·AC·AD·AF·AG·AL·AM·AN·AQ	104.5	72.5	□52	15.5	32	115.5	83.5	□52	15.5	32
	AB·AE·AH·AJ·AK	109.5	77.5	□52	20.5	37	120.5	88.5	□52	20.5	37
	BA·BB·BD·BE·BG·BH·BJ	104.5	72.5	□60	15.5	32	115.5	83.5	□60	15.5	32
	BC·BF	109.5	77.5	□60	20.5	37	120.5	88.5	□60	20.5	37
	CA	109.5	77.5	□70	20.5	37	120.5	88.5	□70	20.5	37
VRSF-□-□B-14** (Input shaft bore ≤ φ14)	BA·BB·BD·BE·BF·BG·BH·BJ·BK·BP	107.5	75.5	□65	16.5	35	118.5	86.5	□65	16.5	35
	BC·BH·BM·BN	112.5	80.5	□65	21.5	40	123.5	91.5	□65	21.5	40
	BL	117.5	85.5	□65	26.5	45	128.5	96.5	□65	26.5	45
	CA·CC	107.5	75.5	□70	16.5	35	118.5	86.5	□70	16.5	35
	CB	112.5	80.5	□70	21.5	40	123.5	91.5	□70	21.5	40
	DA·DB·DC·DD·DF·DH·DJ	107.5	75.5	□80	16.5	35	118.5	86.5	□80	16.5	35
	DE·DL	112.5	80.5	□80	21.5	40	123.5	91.5	□80	21.5	40
	DG·DK	117.5	85.5	□80	26.5	45	128.5	96.5	□80	26.5	45
	EA·EB·EC·EF·EG·EK·EL	107.5	75.5	□90	16.5	35	118.5	86.5	□90	16.5	35
	EJ·EM	112.5	80.5	□90	21.5	40	123.5	91.5	□90	21.5	40
	ED·EE·EH	117.5	85.5	□90	26.5	45	128.5	96.5	□90	26.5	45
	FA	107.5	75.5	□100	16.5	35	118.5	86.5	□100	16.5	35
	FB	107.5	75.5	□115	16.5	35	118.5	86.5	□115	16.5	35

*1) Single reduction : 1/3 - 1/5, Double reduction : 1/15 - 1/35

*2) Bushing will be inserted to adapt to motor shaft

For an explanation on the Adapter Flange Code, please turn to page 422.

A more comprehensive adapter flange offering can be found using the NIDEC-SHIMPO Online Selector Tool. The variety is constantly expanding and being updated on the Selector Tool. If you have any questions or need any support, contact NIDEC-SHIMPO.