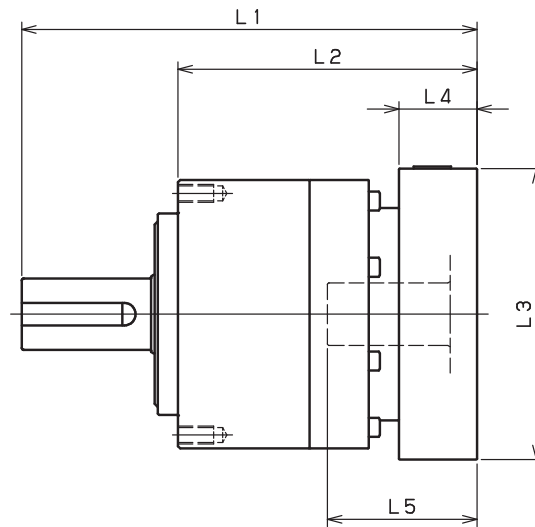


VRL-070 – 1-Stage Adapter Dimensions



Model number	**: Adapter code	1-Stage					
		L1	L*	L2	L3	L4	L5
VRL-070-□-□-8** (Input shaft bore ≤ φ8)	AA•AC•AD•AF•AG•AL•AM•AN•AQ	112	96.5	76	□52	15.5	32
	AB•AE•AH•AJ•AK	117	96.5	81	□52	20.5	37
	BA•BB•BD•BE•BG•BH•BJ	112	96.5	76	□60	15.5	32
	BC•BF	117	96.5	81	□60	20.5	37
	CA	117	96.5	81	□70	20.5	37
VRL-070-□-□-14** (Input shaft bore ≤ φ14)	BA•BB•BD•BE•BF•BG•BH•BJ•BK•BP	115	98.5	79	□65	16.5	35
	BC•BH•BM•BN	120	98.5	84	□65	21.5	40
	BL	125	98.5	89	□65	26.5	45
	CA•CC	115	98.5	79	□70	16.5	35
	CB	120	98.5	84	□70	21.5	40
	DA•DB•DC•DD•DF•DH•DJ	115	98.5	79	□80	16.5	35
	DE•DL	120	98.5	84	□80	21.5	40
	DG•DK	125	98.5	89	□80	26.5	45
	EA•EB•EC•EF•EG•EK•EL	115	98.5	79	□90	16.5	35
	EJ•EM	120	98.5	84	□90	21.5	40
	ED•EE•EH	125	98.5	89	□90	26.5	45
	FA	115	98.5	79	□100	16.5	35
FB	115	98.5	79	□115	16.5	35	
VRL-070-□-□-19** (Input shaft bore ≤ φ19)	DA•DB•DC	130	105	94	□80	25	50
	DD	140	105	104	□80	35	60
	DE	135	105	99	□80	30	55
	EA	135	105	99	□90	30	55
	EB•ED	130	105	94	□90	25	50
	EC	140	105	104	□90	35	60
	FA	130	105	94	□100	25	50
	FB	140	105	104	□100	35	60

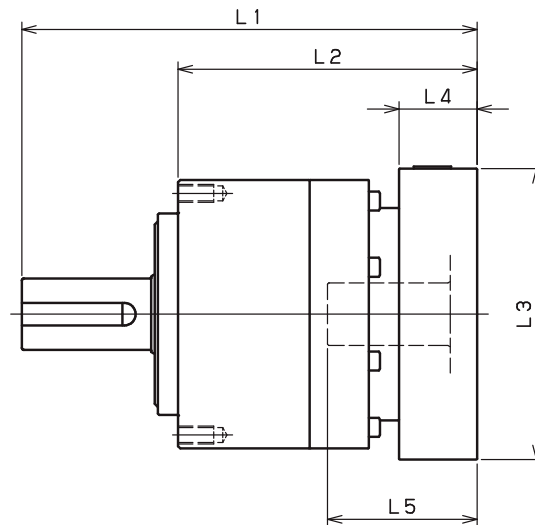
*1) Single reduction : 1/3~ 1/10

*2) Bushing will be inserted to adapt to motor shaft

For an explanation on the Adapter Flange Code, please turn to page 422.

A more comprehensive adapter flange offering can be found using the NIDEC-SHIMPO Online Selector Tool. The variety is constantly expanding and being updated on the Selector Tool. If you have any questions or need any support, contact NIDEC-SHIMPO.

VRL-070 – 2-Stage Adapter Dimensions



Model number	**: Adapter code	2-Stage					
		L1	L*	L2	L3	L4	L5
VRL-070-□-□-8** (Input shaft bore ≤ φ8)	AA•AC•AD•AF•AG•AL•AM•AN•AQ	131	115.5	95	□52	15.5	32
	AB•AE•AH•AJ•AK	136	115.5	100	□52	20.5	37
	BA•BB•BD•BE•BG•BH•BJ	131	115.5	95	□60	15.5	32
	BC•BF	136	115.5	100	□60	20.5	37
	CA	136	115.5	100	□70	20.5	37
VRL-070-□-□-14** (Input shaft bore ≤ φ14)	BA•BB•BD•BE•BF•BG•BH•BJ•BK•BP	136	119.5	100	□65	16.5	35
	BC•BH•BM•BN	141	119.5	105	□65	21.5	40
	BL	146	119.5	110	□65	26.5	45
	CA•CC	136	119.5	100	□70	16.5	35
	CB	141	119.5	105	□70	21.5	40
	DA•DB•DC•DD•DF•DH•DJ	136	119.5	100	□80	16.5	35
	DE•DL	141	119.5	105	□80	21.5	40
	DG•DK	146	119.5	110	□80	26.5	45
	EA•EB•EC•EF•EG•EK•EL	136	119.5	100	□90	16.5	35
	EJ•EM	141	119.5	105	□90	21.5	40
	ED•EE•EH	146	119.5	110	□90	26.5	45
	FA	136	119.5	100	□100	16.5	35
	FB	136	119.5	100	□115	16.5	35
VRL-070-□-□-19** (Input shaft bore ≤ φ19)	DA•DB•DC	151	126	115	□80	25	50
	DD	161	126	125	□80	35	60
	DE	156	126	120	□80	30	55
	EA	156	126	120	□90	30	55
	EB•ED	151	126	115	□90	25	50
	EC	161	126	125	□90	35	60
	FA	151	126	115	□100	25	50
	FB	161	126	125	□100	35	60

*1) Double reduction : 1/15~ 1/100

*2) Bushing will be inserted to adapt to motor shaft

For an explanation on the Adapter Flange Code, please turn to page 422.

A more comprehensive adapter flange offering can be found using the NIDEC-SHIMPO Online Selector Tool. The variety is constantly expanding and being updated on the Selector Tool. If you have any questions or need any support, contact NIDEC-SHIMPO.