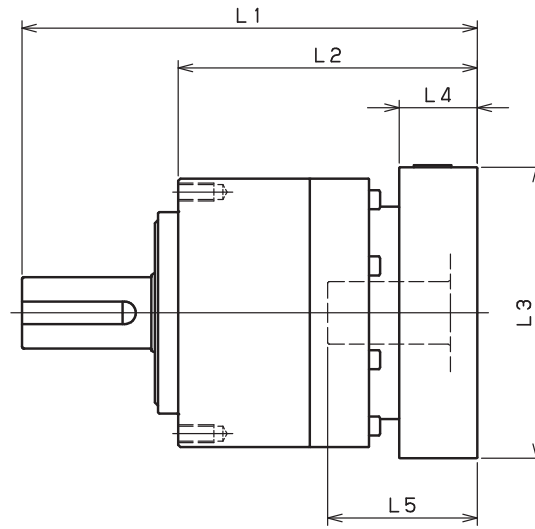


VRL-050 – 1-Stage Adapter Dimensions



| Model number | **: Adapter code | 1-Stage | | | | | |
|--|----------------------------|---------|----|----|-----|------|----|
| | | L1 | L* | L2 | L3 | L4 | L5 |
| VRL-050-□-□-S8** (Input shaft bore ≤ φ8) | ZA·ZC·ZD·ZF·ZG·ZL·ZM·ZN·ZQ | 88.5 | 73 | 64 | □42 | 15.5 | 32 |
| | ZB·ZE·ZH·ZJ·ZK | 93.5 | 73 | 69 | □42 | 20.5 | 37 |
| | BA·BB·BD·BE·BG·BH·BJ | 88.5 | 73 | 64 | □60 | 15.5 | 32 |
| | BC·BF | 93.5 | 73 | 69 | □60 | 20.5 | 37 |
| VRL-050-□-□-14** (Input shaft bore ≤ φ14) | BA·BB·BD·BE·BF·BG·BJ·BK·BP | 91.5 | 75 | 67 | □65 | 16.5 | 35 |
| | BC·BH·BM·BN | 96.5 | 75 | 72 | □65 | 21.5 | 40 |
| | BL | 101.5 | 75 | 77 | □65 | 26.5 | 45 |

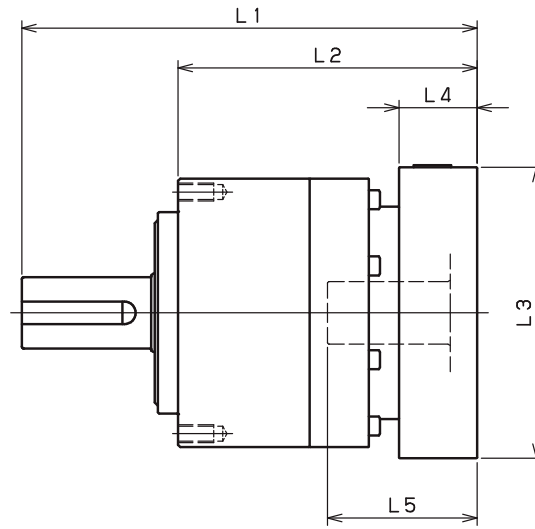
*1) Single reduction : 1/3 - 1/10

*2) Bushing will be inserted to adapt to motor shaft

For an explanation on the Adapter Flange Code, please turn to page 422.

A more comprehensive adapter flange offering can be found using the NIDEC-SHIMPO Online Selector Tool. The variety is constantly expanding and being updated on the Selector Tool. If you have any questions or need any support, contact NIDEC-SHIMPO.

VRL-050 – 2-Stage Adapter Dimensions



| Model number | **: Adapter code | 2-Stage | | | | | |
|--|----------------------------|---------|------|------|-----|------|----|
| | | L1 | L* | L2 | L3 | L4 | L5 |
| VRL-050-□-□-S8** (Input shaft bore ≤ φ8) | ZA·ZC·ZD·ZF·ZG·ZL·ZM·ZN·ZQ | 105 | 89.5 | 80.5 | □42 | 15.5 | 32 |
| | ZB·ZE·ZH·ZJ·ZK | 110 | 89.5 | 85.5 | □42 | 20.5 | 37 |
| | BA·BB·BD·BE·BG·BH·BJ | 105 | 89.5 | 80.5 | □60 | 15.5 | 32 |
| | BC·BF | 110 | 89.5 | 85.5 | □60 | 20.5 | 37 |
| VRL-050-□-□-14** (Input shaft bore ≤ φ14) | BA·BB·BD·BE·BF·BG·BJ·BK·BP | -- | -- | -- | -- | -- | -- |
| | BC·BH·BM·BN | -- | -- | -- | -- | -- | -- |
| | BL | -- | -- | -- | -- | -- | -- |

*1) Double reduction : 1/15 - 1/100

*2) Bushing will be inserted to adapt to motor shaft

For an explanation on the Adapter Flange Code, please turn to page 422.

A more comprehensive adapter flange offering can be found using the NIDEC-SHIMPO Online Selector Tool. The variety is constantly expanding and being updated on the Selector Tool. If you have any questions or need any support, contact NIDEC-SHIMPO.