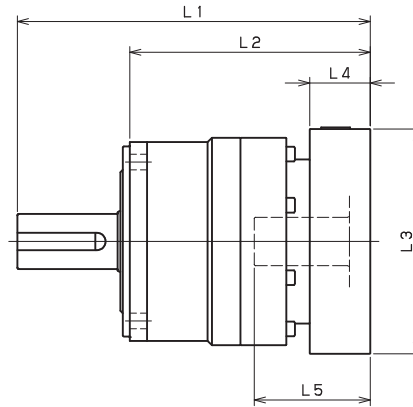


VRB-SERIES Inline shaft

VRB-115 – 1-Stage Adapter Dimensions



Model number	**: Adapter code	1-Stage					
		L1	L*	L2	L3	L4	L5
VRB-115-□-□-14** (Input shaft bore ≤ φ14)	BA•BB•BD•BE•BF•BG•BH•BJ•BK•BP	--	--	--	--	--	--
	BC•BH•BM•BN	--	--	--	--	--	--
	CA•CC	--	--	--	--	--	--
	DA•DB•DC•DD•DF•DH•DJ	--	--	--	--	--	--
	EA•EB•EC•EF•EG•EK•EL	--	--	--	--	--	--
	FA	--	--	--	--	--	--
	FB	--	--	--	--	--	--
VRB-115-□-□-19** (Input shaft bore ≤ φ19)	DA•DB•DC	187	162	122	□80	25	50
	EB•ED	187	162	122	□90	25	50
	FA	187	162	122	□100	25	50
	FB	197	162	132	□100	35	60
	GB•GD•GJ	187	162	122	□115	25	50
	HA	187	162	122	□130	25	50
	HB	202	162	137	□130	40	65
VRB-115-□-□-28** (Input shaft bore ≤ φ28)	JA	197	162	132	□150	35	60
	FA•FB•FC	204	169	139	□100	35	67
	FD•FE	199	169	134	□100	30	62
	GA•GB•GC•GD•GE•GF•GG•GH	204	169	139	□115	35	67
	HA•HC•HD	204	169	139	□130	35	67
	HB	214	169	149	□130	45	77
	HE	219	169	154	□130	50	82
	HF	199	169	134	□130	30	62
	JA•JB•JC•JF	204	169	139	□150	35	67
	JD	224	169	159	□150	55	87
VRB-115-□-□-38** (Input shaft bore ≤ φ38)	JE	214	169	149	□150	45	77
	KA•KB•KE	204	169	139	□180	35	67
	KD	214	169	149	□180	45	77
	HA	225	180	160	□130	45	82
	HB•HE	220	180	155	□130	40	77
	JA	225	180	160	□150	45	82
	KA•KB•KC	225	180	160	□180	45	82
	KD	260	180	195	□180	80	117
	KE	240	180	175	□180	60	97

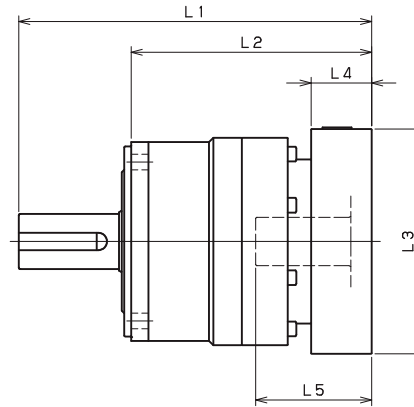
*1) Single reduction : 1/3~ 1/10

*2) Bushing will be inserted to adapt to motor shaft

For an explanation on the Adapter Flange Code, please turn to page 422.

A more comprehensive adapter flange offering can be found using the NIDEC-SHIMPO Online Selector Tool. The variety is constantly expanding and being updated on the Selector Tool. If you have any questions or need any support, contact NIDEC-SHIMPO.

VRB-115 – 2-Stage Adapter Dimensions



Model number	**: Adapter code	2-Stage					
		L1	L*	L2	L3	L4	L5
VRB-115-□-□-14** (Input shaft bore ≤ φ14)	BA•BB•BD•BE•BF•BG•BH•BJ•BK•BP	204.5	188	139.5	□65	16.5	35
	BC•BH•BM•BN	209.5	188	144.5	□65	21.5	40
	CA•CC	204.5	188	139.5	□70	16.5	35
	DA•DB•DC•DD•DF•DH•DJ	204.5	188	139.5	□80	16.5	35
	EA•EB•EC•EF•EG•EK•EL	204.5	188	139.5	□90	16.5	35
	FA	204.5	188	139.5	□100	16.5	35
	FB	214.5	188	149.5	□100	26.5	45
VRB-115-□-□-19** (Input shaft bore ≤ φ19)	JA	219.5	188	154.5	□150	31.5	50
	DA•DB•DC	214.5	189.5	149.5	□80	25	50
	EB•ED	214.5	189.5	149.5	□90	25	50
	FA	214.5	189.5	149.5	□100	25	50
	FB	224.5	189.5	159.5	□100	35	60
	GB•GD•GJ	214.5	189.5	149.5	□115	25	50
	HA	214.5	189.5	149.5	□130	25	50
VRB-115-□-□-28** (Input shaft bore ≤ φ28)	HB	229.5	189.5	164.5	□130	40	65
	JA	224.5	189.5	159.5	□150	35	60
	FA•FB•FC	231.5	196.5	166.5	□100	35	67
	FD•FE	226.5	196.5	161.5	□100	30	62
	GA•GB•GC•GD•GE•GF•GG•GH	231.5	196.5	166.5	□115	35	67
	HA•HC•HD	231.5	196.5	166.5	□130	35	67
	HB	241.5	196.5	176.5	□130	45	77
	HE	246.5	196.5	181.5	□130	50	82
	HF	226.5	196.5	161.5	□130	30	62
	JA•JB•JC•JF	231.5	196.5	166.5	□150	35	67
	JD	251.5	196.5	186.5	□150	55	87
VRB-115-□-□-38** (Input shaft bore ≤ φ38)	JE	241.5	196.5	176.5	□150	45	77
	KA•KB•KE	231.5	196.5	166.5	□180	35	67
	KD	241.5	196.5	176.5	□180	45	77
	HA	249	204	184	□130	45	82
	HB•HE	244	204	179	□130	40	77
VRB-115-□-□-38** (Input shaft bore ≤ φ38)	JA	249	204	184	□150	45	82
	KA•KB•KC	249	204	184	□180	45	82
	KD	284	204	219	□180	80	117
	KE	264	204	199	□180	60	97

*1) Double reduction : 1/15~ 1/100

*2) Bushing will be inserted to adapt to motor shaft

For an explanation on the Adapter Flange Code, please turn to page 422.

A more comprehensive adapter flange offering can be found using the NIDEC-SHIMPO Online Selector Tool. The variety is constantly expanding and being updated on the Selector Tool. If you have any questions or need any support, contact NIDEC-SHIMPO.