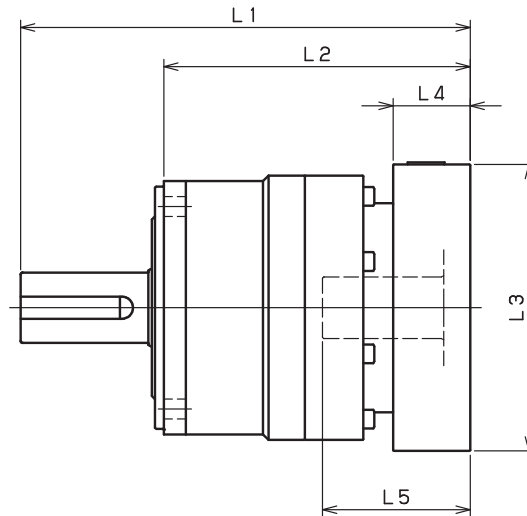


VRB-060 – 1-Stage Adapter Dimensions



Model number	**: Adapter code	1-Stage					
		L1	L*	L2	L3	L4	L5
VRB-060-□-□-8** (Input shaft bore ≤ φ8)	AA·AC·AD·AF·AG·AL·AM·AN·AQ	112	96.5	75	□52	15.5	32
	AB·AE·AH·AJ·AK	117	96.5	80	□52	20.5	37
	BA·BB·BD·BE·BG·BH·BJ	112	96.5	75	□60	15.5	32
	BC·BF	117	96.5	80	□60	20.5	37
	CA	117	96.5	80	□70	20.5	37
VRB-060-□-□-14** (Input shaft bore ≤ φ14)	BA·BB·BD·BE·BF·BG·BH·BJ·BK·BP	115	98.5	78	□65	16.5	35
	BC·BH·BM·BN	120	98.5	83	□65	21.5	40
	BL	125	98.5	88	□65	26.5	45
	CA·CC	115	98.5	78	□70	16.5	35
	CB	120	98.5	83	□70	21.5	40
	DA·DB·DC·DD·DF·DH·DJ	115	98.5	78	□80	16.5	35
	DE·DL	120	98.5	83	□80	21.5	40
	DG·DK	125	98.5	88	□80	26.5	45
	EA·EB·EC·EF·EG·EK·EL	115	98.5	78	□90	16.5	35
	EJ·EM	120	98.5	83	□90	21.5	40
	ED·EE·EH	125	98.5	88	□90	26.5	45
	FA	115	98.5	78	□100	16.5	35
FB	125	98.5	88	□100	26.5	45	
VRB-060-□-□-19** (Input shaft bore ≤ φ19)	DA·DB·DC	130	105	93	□80	25	50
	DD	140	105	103	□80	35	60
	DE	135	105	98	□80	30	55
	EA	135	105	98	□90	30	55
	EB·ED	130	105	93	□90	25	50
	EC	140	105	103	□90	35	60
	FA	130	105	93	□100	25	50
FB	140	105	103	□100	35	60	

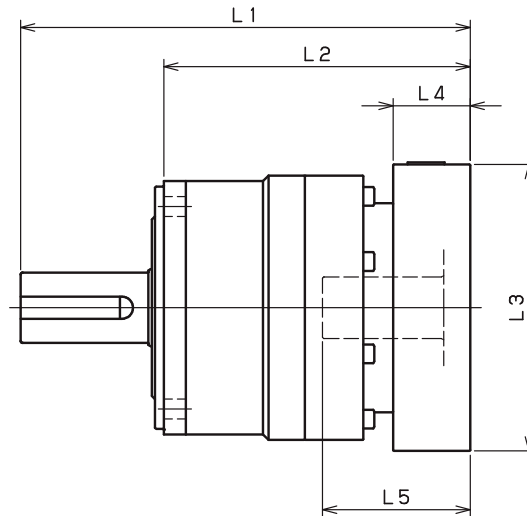
*1) Single reduction : 1/3~ 1/10

*2) Bushing will be inserted to adapt to motor shaft

For an explanation on the Adapter Flange Code, please turn to page 422.

A more comprehensive adapter flange offering can be found using the NIDEC-SHIMPO Online Selector Tool. The variety is constantly expanding and being updated on the Selector Tool. If you have any questions or need any support, contact NIDEC-SHIMPO.

VRB-060 – 2-Stage Adapter Dimensions



Model number	**: Adapter code	2-Stage					
		L1	L*	L2	L3	L4	L5
VRB-060-□-□-8** (Input shaft bore ≤ φ8)	AA·AC·AD·AF·AG·AL·AM·AN·AQ	131	115.5	94	□52	15.5	32
	AB·AE·AH·AJ·AK	136	115.5	99	□52	20.5	37
	BA·BB·BD·BE·BG·BH·BJ	131	115.5	94	□60	15.5	32
	BC·BF	136	115.5	99	□60	20.5	37
	CA	136	115.5	99	□70	20.5	37
VRB-060-□-□-14** (Input shaft bore ≤ φ14)	BA·BB·BD·BE·BF·BG·BH·BJ·BK·BP	136	119.5	99	□65	16.5	35
	BC·BH·BM·BN	141	119.5	104	□65	21.5	40
	BL	146	119.5	109	□65	26.5	45
	CA·CC	136	119.5	99	□70	16.5	35
	CB	141	119.5	104	□70	21.5	40
	DA·DB·DC·DD·DF·DH·DJ	136	119.5	99	□80	16.5	35
	DE·DL	141	119.5	104	□80	21.5	40
	DG·DK	146	119.5	109	□80	26.5	45
	EA·EB·EC·EF·EG·EK·EL	136	119.5	99	□90	16.5	35
	EJ·EM	141	119.5	104	□90	21.5	40
	ED·EE·EH	146	119.5	109	□90	26.5	45
	FA	136	119.5	99	□100	16.5	35
FB	146	119.5	109	□100	26.5	45	
VRB-060-□-□-19** (Input shaft bore ≤ φ19)	DA·DB·DC	151	126	114	□80	25	50
	DD	161	126	124	□80	35	60
	DE	156	126	119	□80	30	55
	EA	156	126	119	□90	30	55
	EB·ED	151	126	114	□90	25	50
	EC	161	126	124	□90	35	60
	FA	151	126	114	□100	25	50
	FB	161	126	124	□100	35	60

*1) Double reduction : 1/15~ 1/100

*2) Bushing will be inserted to adapt to motor shaft

For an explanation on the Adapter Flange Code, please turn to page 422.

A more comprehensive adapter flange offering can be found using the NIDEC-SHIMPO Online Selector Tool. The variety is constantly expanding and being updated on the Selector Tool. If you have any questions or need any support, contact NIDEC-SHIMPO.