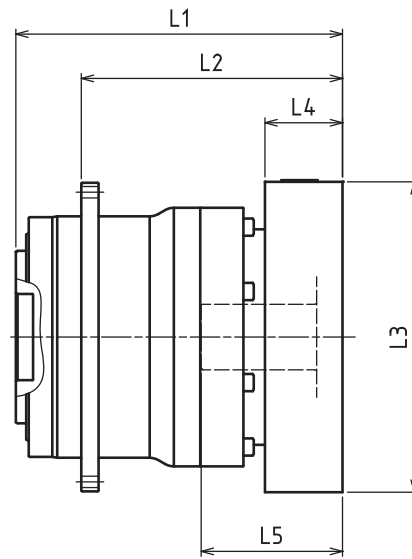


VRT-285 – 1-Stage Adapter Dimensions



Model Number	**: Adapter Code	1-Stage					
		L1	L*	L2	L3	L4	L5
VRT-285-□-□-48** (Input shaft bore ≤ φ48)	KA	--	--	--	--	--	--
	KB-KC	--	--	--	--	--	--
	LA	--	--	--	--	--	--
	MA	--	--	--	--	--	--
	MB	--	--	--	--	--	--
	NA	--	--	--	--	--	--
	PA	--	--	--	--	--	--
VRT-285-□-□-65** (Input shaft bore ≤ φ65)	MA-MB-MC-MD	283.5	203.5	208.5	□220	80	122
	NA-NC	283.5	203.5	208.5	□250	80	122
	NB-ND	313.5	203.5	238.5	□250	110	152
	PA	303.5	203.5	228.5	□280	100	142
	PB	313.5	203.5	238.5	□280	110	152
	QA-QB	303.5	203.5	228.5	□320	100	142

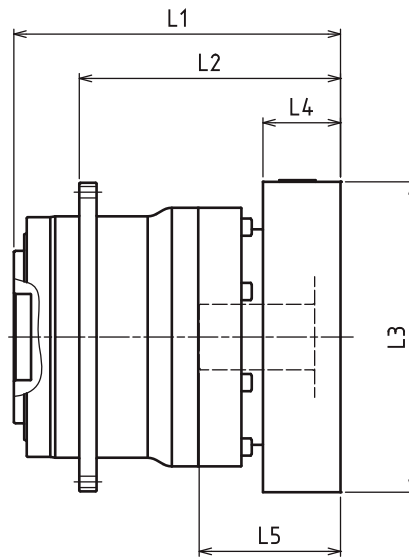
*1) Single reduction : 1/3~ 1/10

*2) Bushing will be inserted to adapt to motor shaft

For an explanation on the Adapter Flange Code, please turn to page 422.

A more comprehensive adapter flange offering can be found using the NIDEC-SHIMPO Online Selector Tool. The variety is constantly expanding and being updated on the Selector Tool. If you have any questions or need any support, contact NIDEC-SHIMPO.

VRT-285 – 2-Stage Adapter Dimensions



Model Number	**: Adapter Code	2-Stage					
		L1	L*	L2	L3	L4	L5
VRT-285-□-□-48** (Input shaft bore ≤ φ48)	KA	339	264	264	□180	75	118
	KB-KC	319	264	244	□180	55	98
	LA	319	264	244	□200	55	98
	MA	319	264	244	□220	55	98
	MB	339	264	264	□220	75	118
	NA	339	264	264	□250	75	118
	PA	339	264	264	□280	75	118
VRT-285-□-□-65** (Input shaft bore ≤ φ65)	MA-MB-MC-MD	--	--	--	--	--	--
	NA-NC	--	--	--	--	--	--
	NB-ND	--	--	--	--	--	--
	PA	--	--	--	--	--	--
	PB	--	--	--	--	--	--
	QA-QB	--	--	--	--	--	--

*1) Double reduction : 1/15~ 1/100

*2) Bushing will be inserted to adapt to motor shaft

For an explanation on the Adapter Flange Code, please turn to page 422.

A more comprehensive adapter flange offering can be found using the NIDEC-SHIMPO Online Selector Tool. The variety is constantly expanding and being updated on the Selector Tool. If you have any questions or need any support, contact NIDEC-SHIMPO.