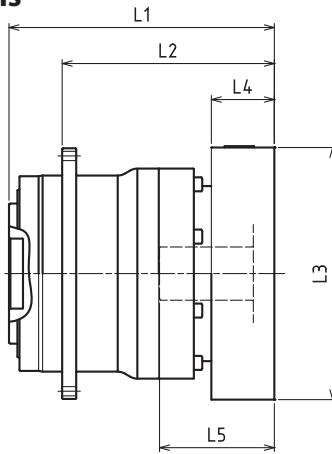


VRT-SERIES Inline shaft

VRT-140 – 1-Stage Adapter Dimensions



| Model Number | **: Adapter Code | 1-Stage | | | | | |
|--|-------------------------|---------|-----|------|------|-----|-----|
| | | L1 | L* | L2 | L3 | L4 | L5 |
| VRT-140-□-□-19** (Input shaft bore ≤ φ19) | DA•DB•DC | -- | -- | -- | -- | -- | -- |
| | EB•ED | -- | -- | -- | -- | -- | -- |
| | FA | -- | -- | -- | -- | -- | -- |
| | FB | -- | -- | -- | -- | -- | -- |
| | GB•GD•GJ | -- | -- | -- | -- | -- | -- |
| | HA | -- | -- | -- | -- | -- | -- |
| | HB | -- | -- | -- | -- | -- | -- |
| VRT-140-□-□-28** (Input shaft bore ≤ φ28) | FA•FB•FC | 154 | 119 | 116 | □100 | 35 | 67 |
| | GA•GB•GC•GD•GE•GF•GG•GH | 154 | 119 | 116 | □115 | 35 | 67 |
| | HA•HC•HD | 154 | 119 | 116 | □130 | 35 | 67 |
| | HB | 164 | 119 | 126 | □130 | 45 | 77 |
| | HF | 149 | 119 | 111 | □130 | 30 | 62 |
| | JA•JB•JC•JF | 154 | 119 | 116 | □150 | 35 | 67 |
| | KA•KB•KE | 154 | 119 | 116 | □180 | 35 | 67 |
| | LA | 154 | 119 | 116 | □200 | 35 | 67 |
| | LB | 164 | 119 | 126 | □200 | 45 | 77 |
| | MA | 154 | 119 | 116 | □220 | 35 | 67 |
| VRT-140-□-□-38** (Input shaft bore ≤ φ38) | MB | 164 | 119 | 126 | □220 | 45 | 77 |
| | HA | 169 | 124 | 131 | □130 | 45 | 82 |
| | HB•HE | 164 | 124 | 126 | □130 | 40 | 77 |
| | JA | 169 | 124 | 131 | □150 | 45 | 82 |
| | KA•KB•KC | 169 | 124 | 131 | □180 | 45 | 82 |
| | KD | 204 | 124 | 166 | □180 | 80 | 117 |
| | KE | 184 | 124 | 146 | □180 | 60 | 97 |
| | LB | 179 | 124 | 141 | □200 | 55 | 92 |
| | MA•MB | 169 | 124 | 131 | □220 | 45 | 82 |
| VRT-140-□-□-48** (Input shaft bore ≤ φ48) | MC | 184 | 124 | 146 | □220 | 60 | 97 |
| | MD | 179 | 124 | 141 | □220 | 55 | 92 |
| | KA | 210 | 135 | 172 | □180 | 75 | 118 |
| | KB•KC | 190 | 135 | 152 | □180 | 55 | 98 |
| | LA | 190 | 135 | 152 | □200 | 55 | 98 |
| MA | 190 | 135 | 152 | □220 | 55 | 98 | |
| MB | 210 | 135 | 172 | □220 | 75 | 118 | |

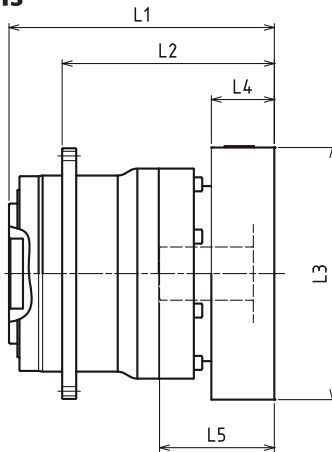
*1) Single reduction : 1/3~ 1/10

*2) Bushing will be inserted to adapt to motor shaft

For an explanation on the Adapter Flange Code, please turn to page 422.

A more comprehensive adapter flange offering can be found using the NIDEC-SHIMPO Online Selector Tool. The variety is constantly expanding and being updated on the Selector Tool. If you have any questions or need any support, contact NIDEC-SHIMPO.

VRT-140 – 2-Stage Adapter Dimensions



| Model Number | **: Adapter Code | 2-Stage | | | | | |
|--|-------------------------|---------|-------|-------|------|----|-----|
| | | L1 | L* | L2 | L3 | L4 | L5 |
| VRT-140-□-□-19** (Input shaft bore ≤ φ19) | DA·DB·DC | 171.5 | 146.5 | 133.5 | □80 | 25 | 50 |
| | EB·ED | 171.5 | 146.5 | 133.5 | □90 | 25 | 50 |
| | FA | 171.5 | 146.5 | 133.5 | □100 | 25 | 50 |
| | FB | 181.5 | 146.5 | 143.5 | □100 | 35 | 60 |
| | GB·GD·GJ | 171.5 | 146.5 | 133.5 | □115 | 25 | 50 |
| | HA | 171.5 | 146.5 | 133.5 | □130 | 25 | 50 |
| | HB | 186.5 | 146.5 | 148.5 | □130 | 40 | 65 |
| | JA | 181.5 | 146.5 | 143.5 | □150 | 35 | 60 |
| VRT-140-□-□-28** (Input shaft bore ≤ φ28) | FA·FB·FC | 188.5 | 153.5 | 150.5 | □100 | 35 | 67 |
| | GA·GB·GC·GD·GE·GF·GG·GH | 188.5 | 153.5 | 150.5 | □115 | 35 | 67 |
| | HA·HC·HD | 188.5 | 153.5 | 150.5 | □130 | 35 | 67 |
| | HB | 198.5 | 153.5 | 160.5 | □130 | 45 | 77 |
| | HF | 183.5 | 153.5 | 145.5 | □130 | 30 | 62 |
| | JA·JB·JC·JF | 188.5 | 153.5 | 150.5 | □150 | 35 | 67 |
| | KA·KB·KE | 188.5 | 153.5 | 150.5 | □180 | 35 | 67 |
| | LA | 188.5 | 153.5 | 150.5 | □200 | 35 | 67 |
| | LB | 198.5 | 153.5 | 160.5 | □200 | 45 | 77 |
| | MA | 188.5 | 153.5 | 150.5 | □220 | 35 | 67 |
| VRT-140-□-□-38** (Input shaft bore ≤ φ38) | HA | 203.5 | 158.5 | 165.5 | □130 | 45 | 82 |
| | HB·HE | 198.5 | 158.5 | 160.5 | □130 | 40 | 77 |
| | JA | 203.5 | 158.5 | 165.5 | □150 | 45 | 82 |
| | KA·KB·KC | 203.5 | 158.5 | 165.5 | □180 | 45 | 82 |
| | KD | 238.5 | 158.5 | 200.5 | □180 | 80 | 117 |
| | KE | 218.5 | 158.5 | 180.5 | □180 | 60 | 97 |
| | LB | 213.5 | 158.5 | 175.5 | □200 | 55 | 92 |
| | MA·MB | 203.5 | 158.5 | 165.5 | □220 | 45 | 82 |
| | MC | 218.5 | 158.5 | 180.5 | □220 | 60 | 97 |
| MD | 213.5 | 158.5 | 175.5 | □220 | 55 | 92 | |
| VRT-140-□-□-48** (Input shaft bore ≤ φ48) | KA | 244.5 | 169.5 | 206.5 | □180 | 75 | 118 |
| | KB·KC | 224.5 | 169.5 | 186.5 | □180 | 55 | 98 |
| | LA | 224.5 | 169.5 | 186.5 | □200 | 55 | 98 |
| | MA | 224.5 | 169.5 | 186.5 | □220 | 55 | 98 |
| | MB | 244.5 | 169.5 | 206.5 | □220 | 75 | 118 |

*1) Double reduction : 1/15~ 1/100

*2) Bushing will be inserted to adapt to motor shaft

For an explanation on the Adapter Flange Code, please turn to page 422.

A more comprehensive adapter flange offering can be found using the NIDEC-SHIMPO Online Selector Tool. The variety is constantly expanding and being updated on the Selector Tool. If you have any questions or need any support, contact NIDEC-SHIMPO.