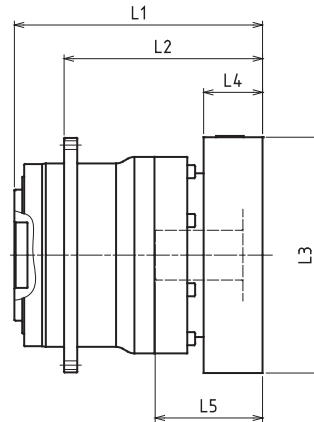


VRT-110 – 1-Stage Adapter Dimensions



Model Number	**: Adapter Code	1-Stage					
		L1	L*	L2	L3	L4	L5
VRT-110-□-□-14** (Input shaft bore ≤ φ14)	BA•BB•BD•BE•BF•BG•BH•BJ•BK•BP	--	--	--	--	--	--
	BC•BH•BM•BN	--	--	--	--	--	--
	CA•CC	--	--	--	--	--	--
	DA•DB•DC•DD•DF•DH•DJ	--	--	--	--	--	--
	EA•EB•EC•EF•EG•EK•EL	--	--	--	--	--	--
	FA	--	--	--	--	--	--
	FB	--	--	--	--	--	--
VRT-110-□-□-19** (Input shaft bore ≤ φ19)	DA • DB • DC	124.5	99.5	95.5	□80	25	50
	EB	124.5	99.5	95.5	□90	25	50
	FA	124.5	99.5	95.5	□100	25	50
	FB	134.5	99.5	105.5	□100	35	60
	GB • GD	124.5	99.5	95.5	□115	25	50
	HA	134.5	99.5	105.5	□115	35	60
	--	124.5	99.5	95.5	□130	25	50
	--	139.5	99.5	110.5	□130	40	65
	--	129.5	99.5	100.5	□130	30	55
VRT-110-□-□-28** (Input shaft bore ≤ φ28)	FA•FB•FC	141.5	106.5	112.5	□100	35	67
	GA•GB•GC•GD•GE•GF•GG•GH	141.5	106.5	112.5	□115	35	67
	HA•HC•HD	141.5	106.5	112.5	□130	35	67
	HB	151.5	106.5	122.5	□130	45	77
	HF	136.5	106.5	107.5	□130	30	62
	JA•JB•JC•JF	141.5	106.5	112.5	□150	35	67
	JD	161.5	106.5	132.5	□150	55	87
	JE	151.5	106.5	122.5	□150	45	77
	KA•KB•KE	141.5	106.5	112.5	□180	35	67
VRT-110-□-□-38** (Input shaft bore ≤ φ38)	KD	151.5	106.5	122.5	□180	45	77
	HA	162.5	117.5	133.5	□130	45	82
	HB•HE	157.5	117.5	128.5	□130	40	77
	JA	162.5	117.5	133.5	□150	45	82
	KA•KB•KC	162.5	117.5	133.5	□180	45	82
	KD	197.5	117.5	168.5	□180	80	117
KE	177.5	117.5	148.5	□180	60	97	

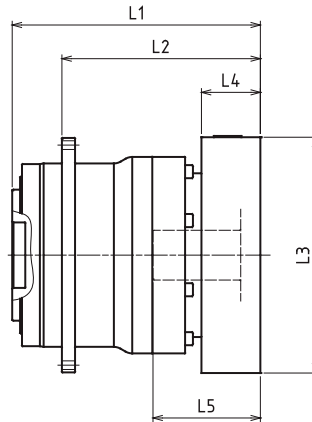
*1) Single reduction : 1/3~ 1/10

*2) Bushing will be inserted to adapt to motor shaft

For an explanation on the Adapter Flange Code, please turn to page 422.

A more comprehensive adapter flange offering can be found using the NIDEC-SHIMPO Online Selector Tool. The variety is constantly expanding and being updated on the Selector Tool. If you have any questions or need any support, contact NIDEC-SHIMPO.

VRT-110 – 2-Stage Adapter Dimensions



Model Number	**: Adapter Code	2-Stage					
		L1	L*	L2	L3	L4	L5
VRT-110-□-□-14** (Input shaft bore ≤ φ14)	BA•BB•BD•BE•BF•BG•BH•BJ•BK•BP	142	125.5	113	□65	16.5	35
	BC•BH•BM•BN	147	125.5	118	□65	21.5	40
	CA•CC	142	125.5	113	□70	16.5	35
	DA•DB•DC•DD•DF•DH•DJ	142	125.5	113	□80	16.5	35
	EA•EB•EC•EF•EG•EK•EL	142	125.5	113	□90	16.5	35
	FA	142	125.5	113	□100	16.5	35
	FB	152	125.5	123	□100	26.5	45
VRT-110-□-□-19** (Input shaft bore ≤ φ19)	DA • DB • DC	152	127	123	□80	25	50
	EB	152	127	123	□90	25	50
	FA	152	127	123	□100	25	50
	FB	162	127	133	□100	35	60
	GB • GD	152	127	123	□115	25	50
	HA	162	127	133	□115	35	60
	--	152	127	123	□130	25	50
	--	167	127	138	□130	40	65
	--	157	127	128	□130	30	55
VRT-110-□-□-28** (Input shaft bore ≤ φ28)	FA•FB•FC	169	134	140	□100	35	67
	GA•GB•GC•GD•GE•GF•GG•GH	169	134	140	□115	35	67
	HA•HC•HD	169	134	140	□130	35	67
	HB	179	134	150	□130	45	77
	HF	164	134	135	□130	30	62
	JA•JB•JC•JF	169	134	140	□150	35	67
	JD	189	134	160	□150	55	87
	JE	179	134	150	□150	45	77
	KA•KB•KE	169	134	140	□180	35	67
VRT-110-□-□-38** (Input shaft bore ≤ φ38)	KD	179	134	150	□180	45	77
	HA	186.5	141.5	157.5	□130	45	82
	HB•HE	181.5	141.5	152.5	□130	40	77
	JA	186.5	141.5	157.5	□150	45	82
	KA•KB•KC	186.5	141.5	157.5	□180	45	82
	KD	221.5	141.5	192.5	□180	80	117
KE	201.5	141.5	172.5	□180	60	97	

*1) Double reduction : 1/15~ 1/100

*2) Bushing will be inserted to adapt to motor shaft

For an explanation on the Adapter Flange Code, please turn to page 422.

A more comprehensive adapter flange offering can be found using the NIDEC-SHIMPO Online Selector Tool. The variety is constantly expanding and being updated on the Selector Tool. If you have any questions or need any support, contact NIDEC-SHIMPO.