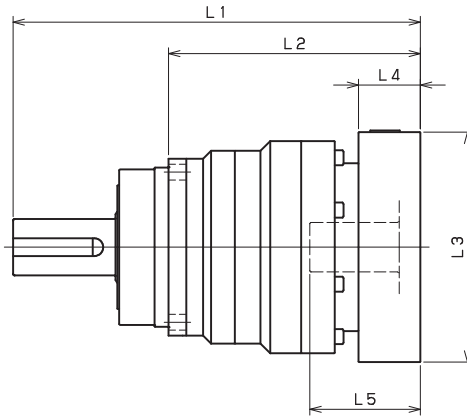


VRS-SERIES Inline shaft

VRS-140 – 1-Stage Adapter Dimensions



Model number	**: Adapter code	1-Stage					
		L1	L*	L2	L3	L4	L5
VRS-140-□-□-19** (Input shaft bore ≤ φ19)	DA•DB•DC	--	--	--	--	--	--
	EB•ED	--	--	--	--	--	--
	FA	--	--	--	--	--	--
	FB	--	--	--	--	--	--
	GB•GD•GJ	--	--	--	--	--	--
	HA	--	--	--	--	--	--
	HB	--	--	--	--	--	--
VRS-140-□-□-28** (Input shaft bore ≤ φ28)	FA•FB•FC	274	239	162	□100	35	67
	GA•GB•GC•GD•GE•GF•GG•GH	274	239	162	□115	35	67
	HA•HC•HD	274	239	162	□130	35	67
	HB	284	239	172	□130	45	77
	HF	269	239	157	□130	30	62
	JA•JB•JC•JF	274	239	162	□150	35	67
	KA•KB•KE	274	239	162	□180	35	67
	LA	274	239	162	□200	35	67
	LB	284	239	172	□200	45	77
	MA	274	239	162	□220	35	67
VRS-140-□-□-38** (Input shaft bore ≤ φ38)	MB	284	239	172	□220	45	77
	HA	289	244	177	□130	45	82
	HB•HE	284	244	172	□130	40	77
	JA	289	244	177	□150	45	82
	KA•KB•KC	289	244	177	□180	45	82
	KD	324	244	212	□180	80	117
	KE	304	244	192	□180	60	97
	LB	299	244	187	□200	55	92
	MA•MB	289	244	177	□220	45	82
VRS-140-□-□-48** (Input shaft bore ≤ φ48)	MC	304	244	192	□220	60	97
	MD	299	244	187	□220	55	92
	KA	330	255	218	□180	75	118
	KB•KC	310	255	198	□180	55	98
	LA	310	255	198	□200	55	98
MA	310	255	198	□220	55	98	
MB	330	255	218	□220	75	118	

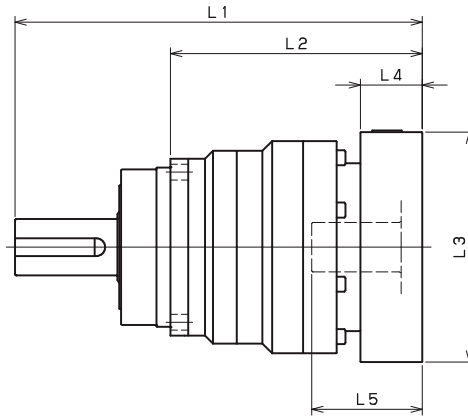
*1) Single reduction : 1/3~ 1/10

*2) Bushing will be inserted to adapt to motor shaft

For an explanation on the Adapter Flange Code, please turn to page 422.

A more comprehensive adapter flange offering can be found using the NIDEC-SHIMPO Online Selector Tool. The variety is constantly expanding and being updated on the Selector Tool. If you have any questions or need any support, contact NIDEC-SHIMPO.

VRS-140 – 2-Stage Adapter Dimensions



Model number	**: Adapter code	2-Stage					
		L1	L*	L2	L3	L4	L5
VRS-140-□-□-19** (Input shaft bore ≤ φ19)	DA•DB•DC	291.5	266.5	179.5	□80	25	50
	EB•ED	291.5	266.5	179.5	□90	25	50
	FA	291.5	266.5	179.5	□100	25	50
	FB	301.5	266.5	189.5	□100	35	60
	GB•GD•GJ	291.5	266.5	179.5	□115	25	50
	HA	291.5	266.5	179.5	□130	25	50
	HB	306.5	266.5	194.5	□130	40	65
VRS-140-□-□-28** (Input shaft bore ≤ φ28)	JA	301.5	266.5	189.5	□150	35	60
	FA•FB•FC	308.5	273.5	196.5	□100	35	67
	GA•GB•GC•GD•GE•GF•GG•GH	308.5	273.5	196.5	□115	35	67
	HA•HC•HD	308.5	273.5	196.5	□130	35	67
	HB	318.5	273.5	206.5	□130	45	77
	HF	303.5	273.5	191.5	□130	30	62
	JA•JB•JC•JF	308.5	273.5	196.5	□150	35	67
	KA•KB•KE	308.5	273.5	196.5	□180	35	67
	LA	308.5	273.5	196.5	□200	35	67
	LB	318.5	273.5	206.5	□200	45	77
VRS-140-□-□-38** (Input shaft bore ≤ φ38)	MA	308.5	273.5	196.5	□220	35	67
	MB	318.5	273.5	206.5	□220	45	77
	HA	323.5	278.5	211.5	□130	45	82
	HB•HE	318.5	278.5	206.5	□130	40	77
	JA	323.5	278.5	211.5	□150	45	82
	KA•KB•KC	323.5	278.5	211.5	□180	45	82
	KD	358.5	278.5	246.5	□180	80	117
	KE	338.5	278.5	226.5	□180	60	97
	LB	333.5	278.5	221.5	□200	55	92
VRS-140-□-□-48** (Input shaft bore ≤ φ48)	MA•MB	323.5	278.5	211.5	□220	45	82
	MC	338.5	278.5	226.5	□220	60	97
	MD	333.5	278.5	221.5	□220	55	92
	KA	364.5	289.5	252.5	□180	75	118
	KB•KC	344.5	289.5	232.5	□180	55	98
VRS-140-□-□-48** (Input shaft bore ≤ φ48)	LA	344.5	289.5	232.5	□200	55	98
	MA	344.5	289.5	232.5	□220	55	98
	MB	364.5	289.5	252.5	□220	75	118

*1) Double reduction : 1/15~ 1/100

*2) Bushing will be inserted to adapt to motor shaft

For an explanation on the Adapter Flange Code, please turn to page 422.

A more comprehensive adapter flange offering can be found using the NIDEC-SHIMPO Online Selector Tool. The variety is constantly expanding and being updated on the Selector Tool. If you have any questions or need any support, contact NIDEC-SHIMPO.