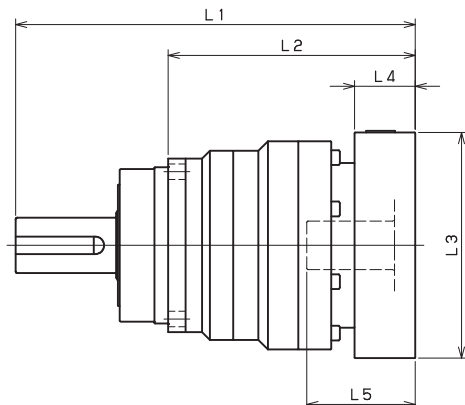


VRS-075 – 1-Stage Adapter Dimensions



Model number	**: Adapter code	1-Stage					
		L1	L*	L2	L3	L4	L5
VRS-075-□-□-8** (Input shaft bore ≤ φ8)	AA·AC·AD·AF·AG·AL·AM·AN·AQ	--	--	--	--	--	--
	AB·AE·AH·AJ·AK	--	--	--	--	--	--
	BA·BB·BD·BE·BG·BH·BJ	--	--	--	--	--	--
	CA	--	--	--	--	--	--
VRS-075-□-□-14** (Input shaft bore ≤ φ14)	BA·BB·BD·BE·BF·BG·BH·BJ·BK·BP	164.5	148	108.5	□65	16.5	35
	BC·BH·BM·BN	169.5	148	113.5	□65	21.5	40
	CA·CC	164.5	148	108.5	□70	16.5	35
	DA·DB·DC·DD·DF·DH·DJ	164.5	148	108.5	□80	16.5	35
	EA·EB·EC·EF·EG·EK·EL	164.5	148	108.5	□90	16.5	35
	FA	164.5	148	108.5	□100	16.5	35
	FB	174.5	148	118.5	□100	26.5	45
VRS-075-□-□-19** (Input shaft bore ≤ φ19)	JA	179.5	148	123.5	□150	31.5	50
	DA·DB·DC	174.5	149.5	118.5	□80	25	50
	EB·ED	174.5	149.5	118.5	□90	25	50
	FA	174.5	149.5	118.5	□100	25	50
	FB	184.5	149.5	128.5	□100	35	60
	GA·GC·GH	179.5	149.5	123.5	□115	30	55
	GB·GD·GJ	174.5	149.5	118.5	□115	25	50
	GE·GF	184.5	149.5	128.5	□115	35	60
	HA	174.5	149.5	118.5	□130	25	50
	HB	189.5	149.5	133.5	□130	40	65
	HC·HD·HE	179.5	149.5	123.5	□130	30	55
VRS-075-□-□-28** (Input shaft bore ≤ φ28)	JA	184.5	149.5	128.5	□150	35	60
	JB	189.5	149.5	133.5	□150	40	65
	FA·FB·FC	191.5	156.5	135.5	□100	35	67
	FD·FE	186.5	156.5	130.5	□100	30	62
	GA·GB·GC·GD·GE·GF·GG·GH	191.5	156.5	135.5	□115	35	67
	HA·HC·HD	191.5	156.5	135.5	□130	35	67
	HB	201.5	156.5	145.5	□130	45	77
	HE	206.5	156.5	150.5	□130	50	82
	HF	186.5	156.5	130.5	□130	30	62
VRS-075-□-□-28** (Input shaft bore ≤ φ28)	JA·JB·JC·JF	191.5	156.5	135.5	□150	35	67
	JD	211.5	156.5	155.5	□150	55	87
	JE	201.5	156.5	145.5	□150	45	77

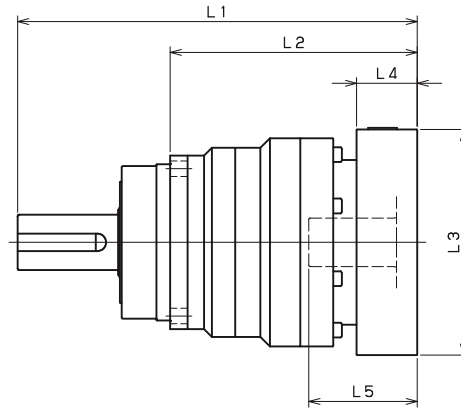
*1) Single reduction : 1/3~ 1/10

*2) Bushing will be inserted to adapt to motor shaft

For an explanation on the Adapter Flange Code, please turn to page 422.

A more comprehensive adapter flange offering can be found using the NIDEC-SHIMPO Online Selector Tool. The variety is constantly expanding and being updated on the Selector Tool. If you have any questions or need any support, contact NIDEC-SHIMPO.

VRS-075 – 2-Stage Adapter Dimensions



Model number	**: Adapter code	2-Stage					
		L1	L*	L2	L3	L4	L5
VRS-075-□-□-8** (Input shaft bore ≤ φ8)	AA·AC·AD·AF·AG·AL·AM·AN·AQ	181.5	166	125.5	□52	15.5	32
	AB·AE·AH·AJ·AK	186.5	166	130.5	□52	20.5	37
	BA·BB·BD·BE·BG·BH·BJ	181.5	166	125.5	□60	15.5	32
	CA	186.5	166	130.5	□70	20.5	37
VRS-075-□-□-14** (Input shaft bore ≤ φ14)	BA·BB·BD·BE·BF·BG·BH·BJ·BK·BP	186.5	170	130.5	□65	16.5	35
	BC·BH·BM·BN	191.5	170	135.5	□65	21.5	40
	CA·CC	186.5	170	130.5	□70	16.5	35
	DA·DB·DC·DD·DF·DH·DJ	186.5	170	130.5	□80	16.5	35
	EA·EB·EC·EF·EG·EK·EL	186.5	170	130.5	□90	16.5	35
	FA	186.5	170	130.5	□100	16.5	35
	FB	196.5	170	140.5	□100	26.5	45
VRS-075-□-□-19** (Input shaft bore ≤ φ19)	DA·DB·DC	196.5	171.5	140.5	□80	25	50
	EB·ED	196.5	171.5	140.5	□90	25	50
	FA	196.5	171.5	140.5	□100	25	50
	FB	206.5	171.5	150.5	□100	35	60
	GA·GC·GH	201.5	171.5	145.5	□115	30	55
	GB·GD·GJ	196.5	171.5	140.5	□115	25	50
	GE·GF	206.5	171.5	150.5	□115	35	60
	HA	196.5	171.5	140.5	□130	25	50
	HB	211.5	171.5	155.5	□130	40	65
	HC·HD·HE	201.5	171.5	145.5	□130	30	55
	JA	206.5	171.5	150.5	□150	35	60
VRS-075-□-□-28** (Input shaft bore ≤ φ28)	FA·FB·FC	215.5	180.5	159.5	□100	35	67
	FD·FE	210.5	180.5	154.5	□100	30	62
	GA·GB·GC·GD·GE·GF·GG·GH	215.5	180.5	159.5	□115	35	67
	HA·HC·HD	215.5	180.5	159.5	□130	35	67
	HB	225.5	180.5	169.5	□130	45	77
	HE	230.5	180.5	174.5	□130	50	82
	HF	210.5	180.5	154.5	□130	30	62
	JA·JB·JC·JF	215.5	180.5	159.5	□150	35	67
	JD	235.5	180.5	179.5	□150	55	87
JE	225.5	180.5	169.5	□150	45	77	

*1) Double reduction : 1/15~ 1/100

*2) Bushing will be inserted to adapt to motor shaft

For an explanation on the Adapter Flange Code, please turn to page 422.

A more comprehensive adapter flange offering can be found using the NIDEC-SHIMPO Online Selector Tool. The variety is constantly expanding and being updated on the Selector Tool. If you have any questions or need any support, contact NIDEC-SHIMPO.