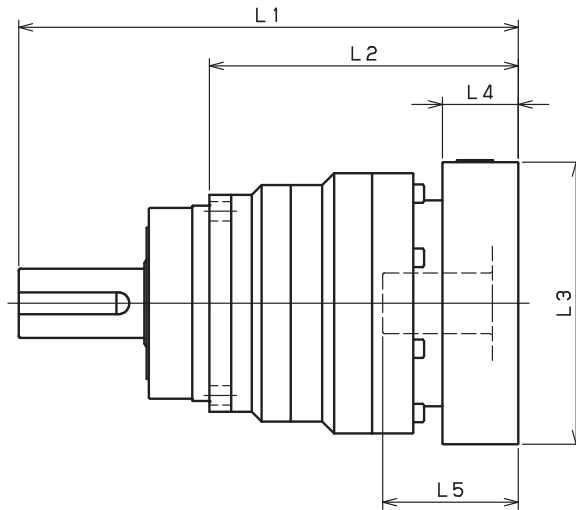


VRS-060 – 1-Stage Adapter Dimensions



Model number	**: Adapter code	1-Stage					
		L1	L*	L2	L3	L4	L5
VRS-060-□-□-8** (Input shaft bore ≤ φ8)	AA·AC·AD·AF·AG·AL·AM·AN·AQ	132	116.5	84	□52	15.5	32
	AB·AE·AH·AJ·AK	137	116.5	89	□52	20.5	37
	BA·BB·BD·BE·BG·BH·BJ	132	116.5	84	□60	15.5	32
	BC·BF	137	116.5	89	□60	20.5	37
	CA	137	116.5	89	□70	20.5	37
VRS-060-□-□-14** (Input shaft bore ≤ φ14)	BA·BB·BD·BE·BF·BG·BH·BJ·BK·BP	135	118.5	87	□65	16.5	35
	BC·BH·BM·BN	140	118.5	92	□65	21.5	40
	BL	145	118.5	97	□65	26.5	45
	CA·CC	135	118.5	87	□70	16.5	35
	CB	140	118.5	92	□70	21.5	40
	DA·DB·DC·DD·DF·DH·DJ	135	118.5	87	□80	16.5	35
	DE·DL	140	118.5	92	□80	21.5	40
	DG·DK	145	118.5	97	□80	26.5	45
	EA·EB·EC·EF·EG·EK·EL	135	118.5	87	□90	16.5	35
	EJ·EM	140	118.5	92	□90	21.5	40
	ED·EE·EH	145	118.5	97	□90	26.5	45
	FA	135	118.5	87	□100	16.5	35
FB	135	118.5	87	□115	16.5	35	
VRS-060-□-□-19** (Input shaft bore ≤ φ19)	DA·DB·DC	150	125	102	□80	25	50
	DD	160	125	112	□80	35	60
	DE	155	125	107	□80	30	55
	EA	155	125	107	□90	30	55
	EB·ED	150	125	102	□90	25	50
	EC	160	125	112	□90	35	60
	FA	150	125	102	□100	25	50
	FB	160	125	112	□100	35	60

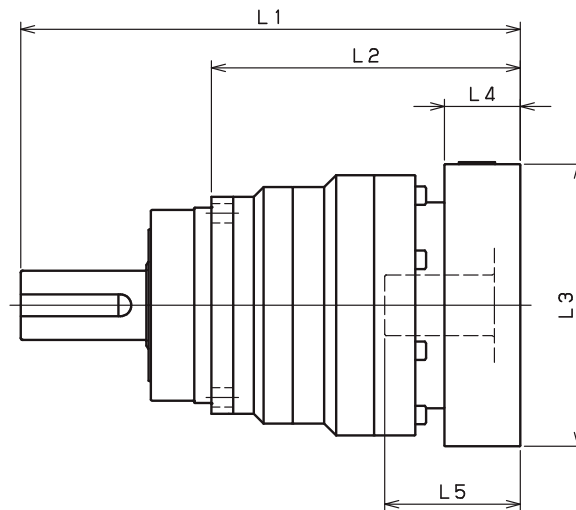
*1) Single reduction : 1/3~ 1/10

*2) Bushing will be inserted to adapt to motor shaft

For an explanation on the Adapter Flange Code, please turn to page 422.

A more comprehensive adapter flange offering can be found using the NIDEC-SHIMPO Online Selector Tool. The variety is constantly expanding and being updated on the Selector Tool. If you have any questions or need any support, contact NIDEC-SHIMPO.

VRS-o6o – 2-Stage Adapter Dimensions



Model number	**: Adapter code	2-Stage					
		L1	L*	L2	L3	L4	L5
VRS-060-□-□-8** (Input shaft bore ≤ φ8)	AA·AC·AD·AF·AG·AL·AM·AN·AQ	151	135.5	103	□52	15.5	32
	AB·AE·AH·AJ·AK	156	135.5	108	□52	20.5	37
	BA·BB·BD·BE·BG·BH·BJ	151	135.5	103	□60	15.5	32
	BC·BF	156	135.5	108	□60	20.5	37
	CA	156	135.5	108	□70	20.5	37
VRS-060-□-□-14** (Input shaft bore ≤ φ14)	BA·BB·BD·BE·BF·BG·BH·BJ·BK·BP	156	139.5	108	□65	16.5	35
	BC·BH·BM·BN	161	139.5	113	□65	21.5	40
	BL	166	139.5	118	□65	26.5	45
	CA·CC	156	139.5	108	□70	16.5	35
	CB	161	139.5	113	□70	21.5	40
	DA·DB·DC·DD·DF·DH·DJ	156	139.5	108	□80	16.5	35
	DE·DL	161	139.5	113	□80	21.5	40
	DG·DK	166	139.5	118	□80	26.5	45
	EA·EB·EC·EF·EG·EK·EL	156	139.5	108	□90	16.5	35
	EJ·EM	161	139.5	113	□90	21.5	40
	ED·EE·EH	166	139.5	118	□90	26.5	45
	FA	156	139.5	108	□100	16.5	35
FB	156	139.5	108	□115	16.5	35	
VRS-060-□-□-19** (Input shaft bore ≤ φ19)	DA·DB·DC	171	146	123	□80	25	50
	DD	181	146	133	□80	35	60
	DE	176	146	128	□80	30	55
	EA	176	146	128	□90	30	55
	EB·ED	171	146	123	□90	25	50
	EC	181	146	133	□90	35	60
	FA	171	146	123	□100	25	50
	FB	181	146	133	□100	35	60

*1) Double reduction : 1/15~ 1/100

*2) Bushing will be inserted to adapt to motor shaft

For an explanation on the Adapter Flange Code, please turn to page 422.

A more comprehensive adapter flange offering can be found using the NIDEC-SHIMPO Online Selector Tool. The variety is constantly expanding and being updated on the Selector Tool. If you have any questions or need any support, contact NIDEC-SHIMPO.