

STR SERIES Hollow Rotary Index Tables

STR 040V 1-Stage and 2-Stage Specifications with VRSF-B

| Frame Size | 040V | | | | | |
|--------------------------------|----------------------------------------|-------|-------------|-------|---------|-------|
| | | | 1-Stage | | 2-Stage | |
| Stage | | | | | | |
| Ratio | Units | Notes | 15 | 45 | 75 | 135 |
| Nominal Torque | [Nm] | *1 | 27 | 27 | 27 | 27 |
| Acceleration Torque | [Nm] | -- | 58 | 58 | 58 | 58 |
| No Load Torque | [Nm] | *1 | 0.5 | 0.2 | 0.2 | 0.2 |
| Nominal Input Speed | [rpm] | *2 | 900 | 2700 | 3000 | 3000 |
| Maximum Input Speed | [rpm] | *2 | 3000 | 5000 | 5000 | 5000 |
| Reflected Inertia (Single) | [kg·m ² ×10 ⁻⁴] | *3 | 0.292 | -- | -- | -- |
| Reflected Inertia (≤Ø 8) | [kg·m ² ×10 ⁻⁴] | *3 | -- | 0.082 | 0.06 | 0.053 |
| Reflected Inertia (≤Ø 14) | [kg·m ² ×10 ⁻⁴] | *3 | -- | 0.151 | 0.131 | 0.121 |
| Backlash | [arc-min] | -- | 0 | 0 | 0 | 0 |
| Angular Transmission Accuracy | [arc-min] | -- | ≤ 1.5 | ≤ 1.5 | | |
| Angular Repeatability Accuracy | [arc-min] | -- | ± 0.2 | ± 0.2 | | |
| Surface Runout | [µm (max)] | -- | 10 | 10 | 10 | 10 |
| Weight | [kg] | -- | 2.5 | 3.2 | 3.2 | 3.2 |
| Maximum Axial Load | [N] | -- | 999 | 999 | 999 | 999 |
| Maximum Radial Load | [N] | -- | 669 | 669 | 669 | 669 |
| Maximum Tilting Moment Load | [Nm] | -- | 33 | 33 | 33 | 33 |
| Efficiency | [%] | -- | 80 | 76 | 76 | 76 |
| Protection Class | -- | *4 | IP54 (IP65) | | | |

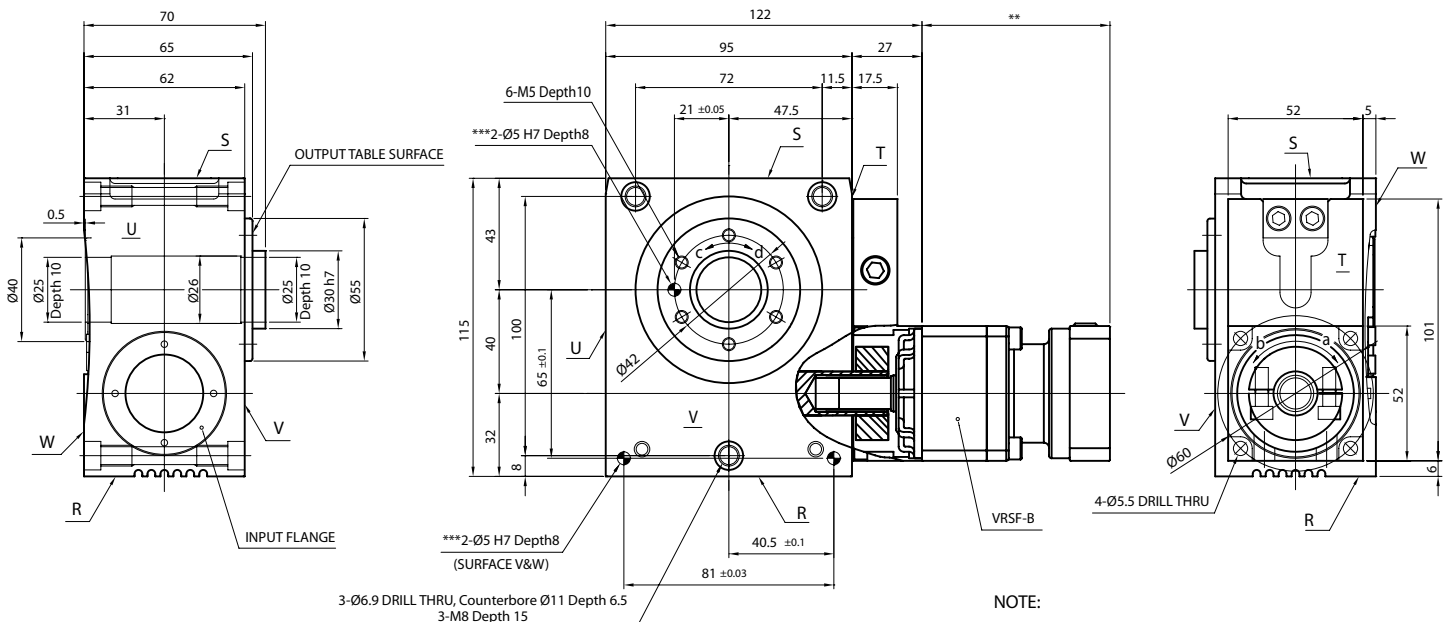
*1) At nominal input speed

*2) Speeds are at the actuator input. Limits when used with additional gearbox are higher

*3) At input shaft

*4) IP65 (wash-down) is available as an option. Contact NIDEC-SHIMPO for more details and our food grade options

STR 040 Dimensions with VRSF-B



NOTE:

** Refer to page 24, for VRSF B-Frame dimensions

*** Optional

ROTATION:

a=d

a=c (upon special request)

